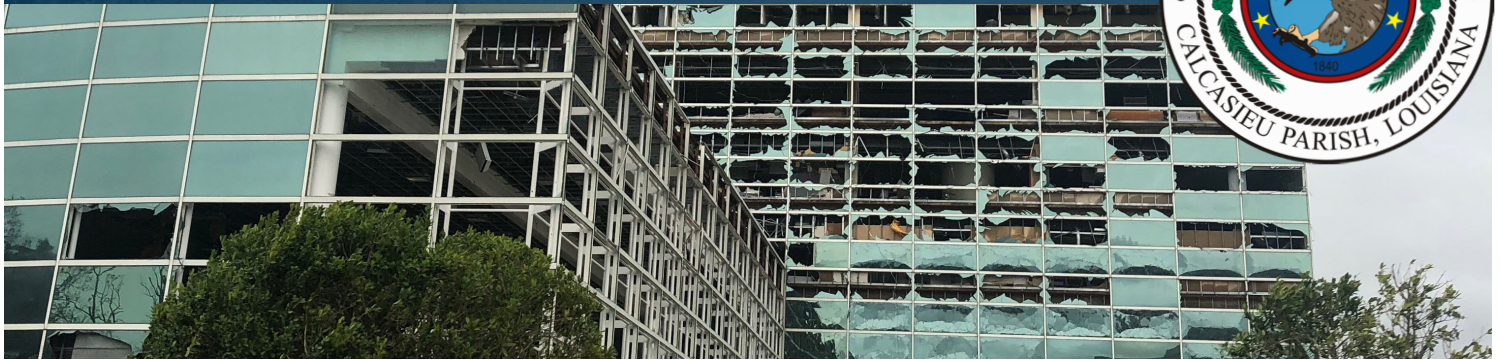


# CALCASIEU PARISH HURRICANES LAURA AND DELTA RECOVERY FRAMEWORK



## RECOVERY FRAMEWORK MISSION

## MISSION

To **restore**, **redevelop**, and **revitalize** local resiliency in Calcasieu Parish by uniting as a “Whole Community” to develop and maintain a comprehensive Recovery Plan in accordance with the Federal Emergency Management Agency’s (FEMA) National Disaster Recovery Framework (NDRF).

## FRAMEWORK GUIDING PRINCIPLES

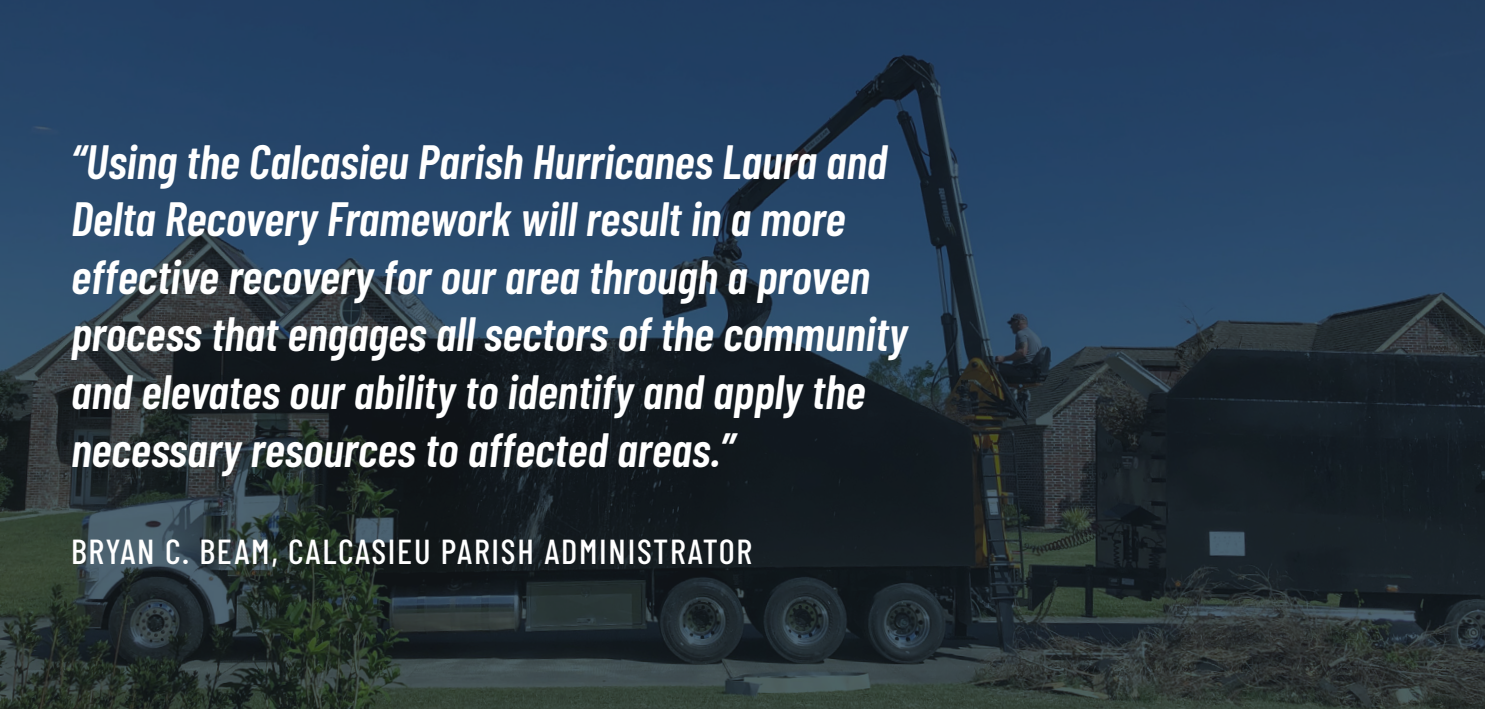
The National Disaster Recovery Framework details **eight principles** that guide recovery capacity development and recovery support activities:

1. Individual and Family Empowerment
2. Leadership and Local Primacy
3. Pre-Disaster Recovery Planning
4. Engaged Partnerships & Inclusiveness
5. Unity of Effort
6. Timeliness and Flexibility
7. Resilience and Sustainability
8. Psychological and Emotional Recovery

These principles maximize the opportunity for achieving recovery success and can be found in further detail at: [www.fema.gov/national-disaster-recovery-framework](http://www.fema.gov/national-disaster-recovery-framework)

## PRINCIPLES





*“Using the Calcasieu Parish Hurricanes Laura and Delta Recovery Framework will result in a more effective recovery for our area through a proven process that engages all sectors of the community and elevates our ability to identify and apply the necessary resources to affected areas.”*

BRYAN C. BEAM, CALCASIEU PARISH ADMINISTRATOR

## PURPOSE AND SCOPE

To provide a **framework for recovery operations** within Calcasieu Parish. The Recovery Framework outlines the ability of the Police Jury and other local, state and federal partners to lead, manage and implement its own recovery process. The Framework is central to the success of local long-term recovery and resilience, and it is also paramount in the short-term recovery processes.

The Framework provides governance, oversight and structure for all Recovery Support Functions (RSFs) within Calcasieu Parish. The coordinating structure of the RSFs is aligned with the six key functional areas as presented in the Federal Emergency Management Agency's (FEMA) National Disaster Recovery Framework.

## WHOLE COMMUNITY APPROACH

Calcasieu Parish's Recovery Framework takes a whole community approach by focusing on how to best restore, redevelop and revitalize the **health, social, economic, natural and environmental fabric** of the community and build a more resilient parish.

A **coordinated recovery effort** is needed to ensure that the inclusive process by which the RSFs will aid local communities is realistic, well-planned and clearly communicated to stakeholders, partners and the public. The process must instill accountability of recovery outcomes.

## KEY RECOVERY FUNCTIONS

Calcasieu Parish has six Recovery Support Functions (RSFs):

1. **Community Planning and Capacity Building**
2. **Economic**
3. **Health and Social Services**
4. **Housing**
5. **Infrastructure**
6. **Natural and Cultural Resources**

Large-scale and catastrophic disasters affect a community's vitality and health. While the recovery framework is broken down into RSFs, the RSFs **work collaboratively**, with each RSF complementing and informing the others.

