

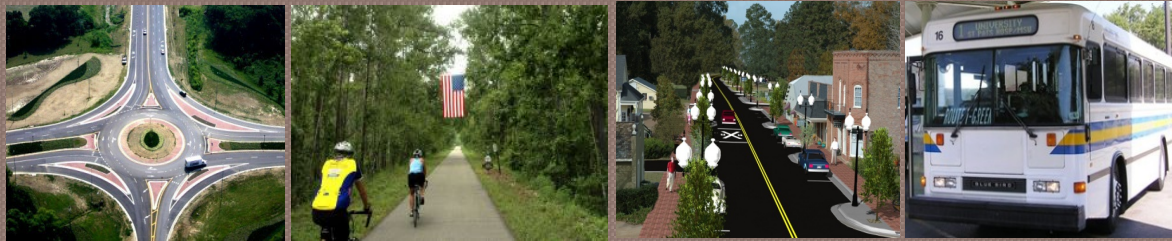


Lake Charles Urbanized Area Transportation Plan 2040



Calcasieu Parish

*CPPJ Meeting
January 27, 2014*



Project Team



MTP 2040 Plan – Volume 1

Chapters:

1. Introduction and Transportation Planning Process
2. Regional Visioning Process
3. Demographic Data Trends and Projections
4. Financial Analysis
5. Streets and Highways
6. Public Transit
7. Bike and Pedestrian
8. Regional Safety
9. Regional Security
10. Environmental Mitigation Analysis
11. Staged Improvement Program



Lake Charles Urbanized Area | MTP **2040**
Calcasieu Parish Transportation Plan: Volume 1
Final Report – July 2014

Developed For:

Imperial Calcasieu Regional Planning and Development Commission
Calcasieu Parish Police Jury
Louisiana Department of Transportation and Development

Developed By:



In Association With:



MTP 2040 Plan – Volume 2

Chapters:

1. Parish Profile and Public Services Analysis
2. Access Management and Roadway Connectivity Policy
3. Typical Roadway Cross Sections



Lake Charles Urbanized Area | MTP **2040**
Calcasieu Parish Transportation Plan: Volume 2
Final Report – December 2014

Developed For:

Imperial Calcasieu Regional Planning and Development Commission
Calcasieu Parish Police Jury
Louisiana Department of Transportation and Development

Developed By:



In Association With:



Demographic Projections

Demographic Data Calcasieu Parish, LA

Variable	2013	2040	Abs. Change	% Change
Population	199,504	273,367	73,863	37%
Dwelling Units	84,695	114,979	30,284	36%
Total Employment	80,189	122,928	42,739	53%
Retail Employment	16,939	27,634	10,695	63%
School Enrollment	46,804	65,390	18,586	40%

Parish Profile: Comparison “Counties”



Lancaster Co., NE (Lincoln)



Lafayette Parish, LA (Lafayette)

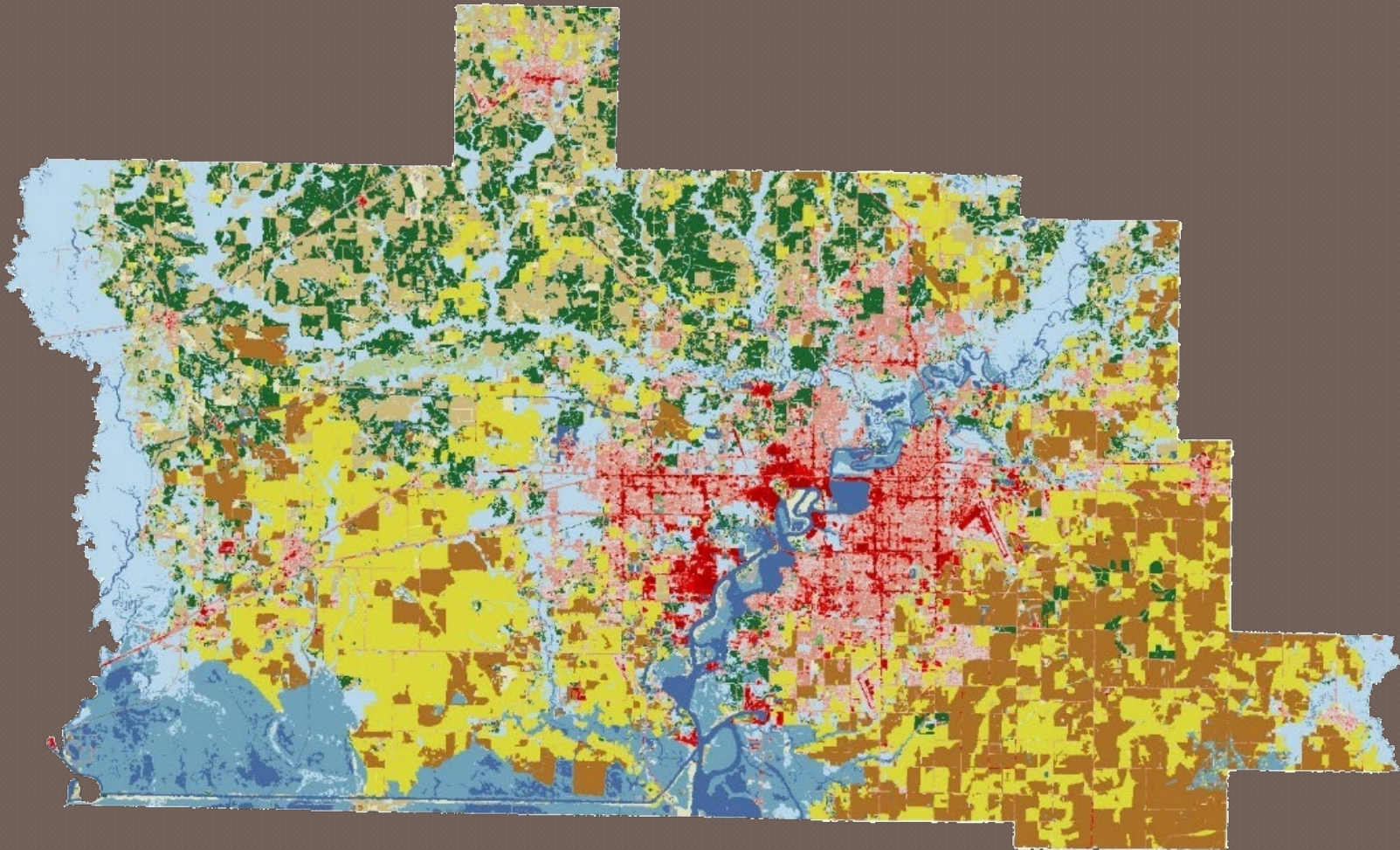


Whatcom Co., WA (Bellingham)



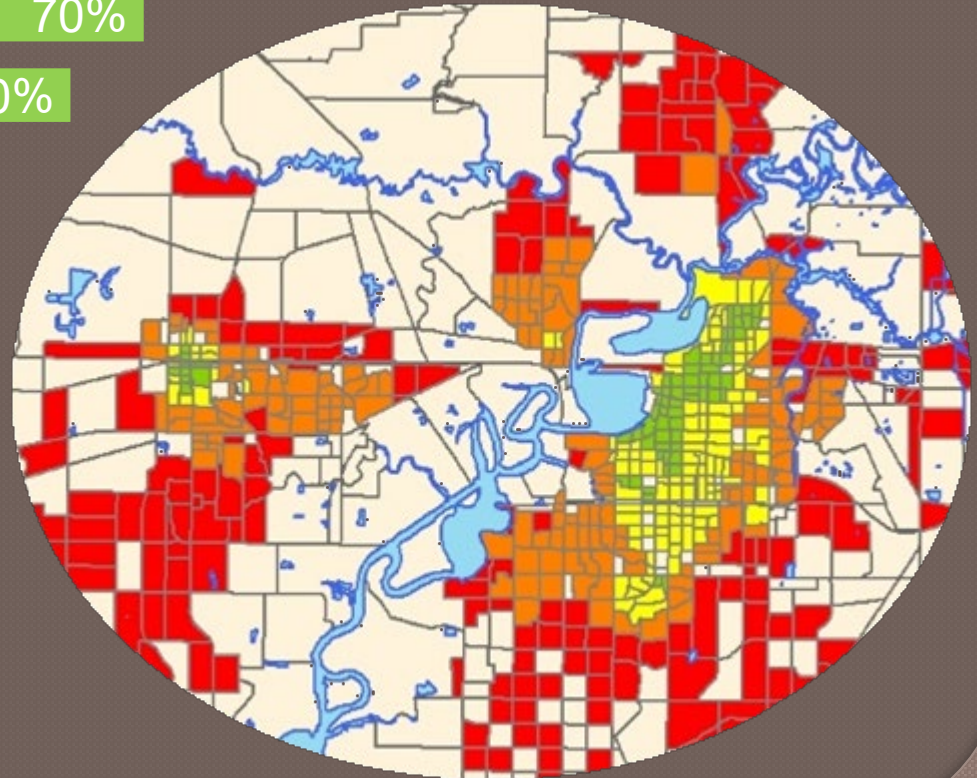
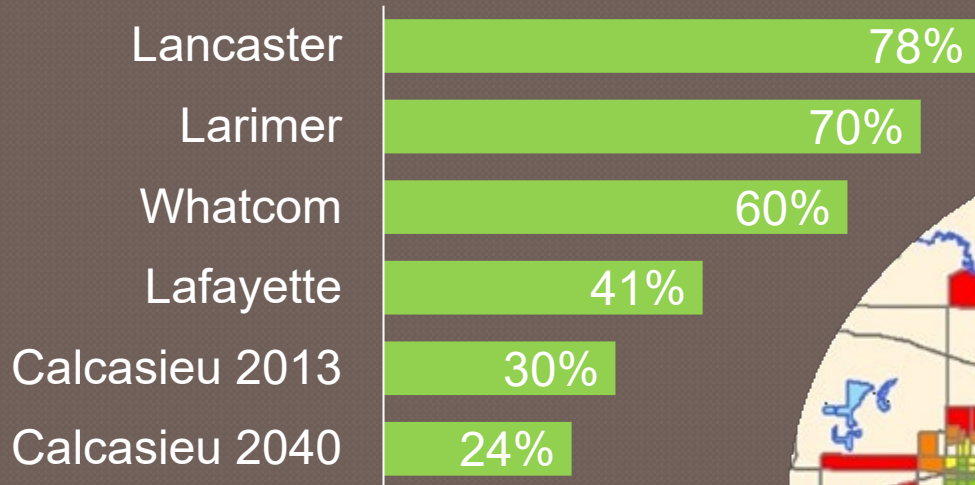
Larimer Co., CO (Ft. Collins)

Parish Profile: Environment



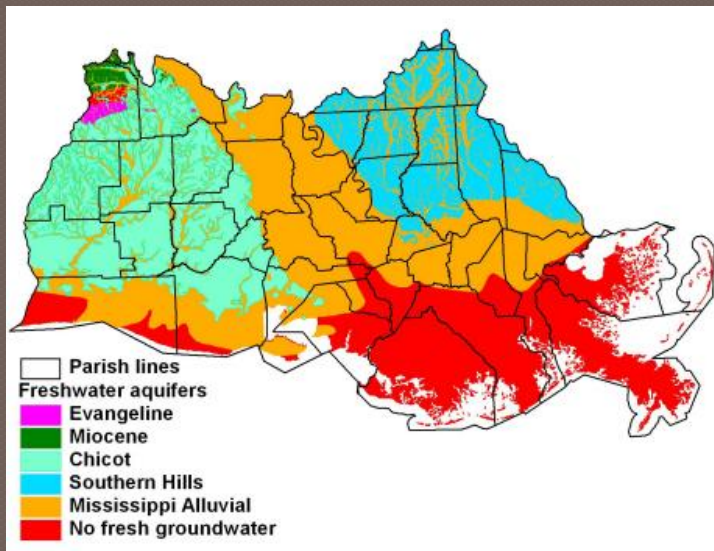
Parish Profile: Land Use

Urban Population Living in Somewhat Walkable Area



Parish Profile: Public Utilities

- Potable Water
- Wastewater
- Asset Management and Coordinated Regional Planning



Parish Profile: Parks

- Park land per capita near national average
- Approximately 1,000 additional acres by 2040 to keep pace with growth
- Greatest need at urban fringe, but also smaller parks in some existing urban areas



Parish Profile: Libraries and Schools

- Library square footage per capita is below some standards.
- Greatest future need in South Lake Charles, Moss Bluff, and Carlyss/Sulphur.
- Safe Routes to School.



Parish Profile: Health and Safety

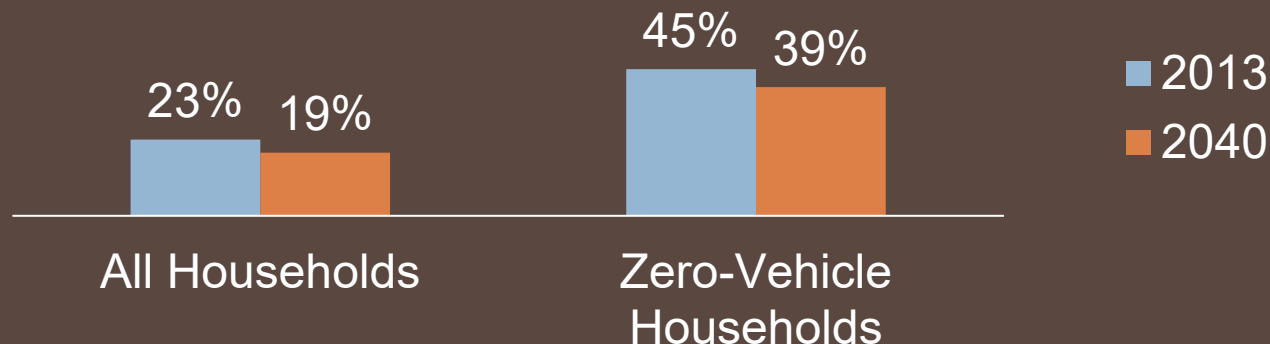
- High number of hospital beds and hospital employees per capita.
- Greatest demand for expanded police/fire in high growth areas, especially Carlyss/Sulphur area.



Parish Profile: Sidewalk and Fixed-Route Bus Coverage

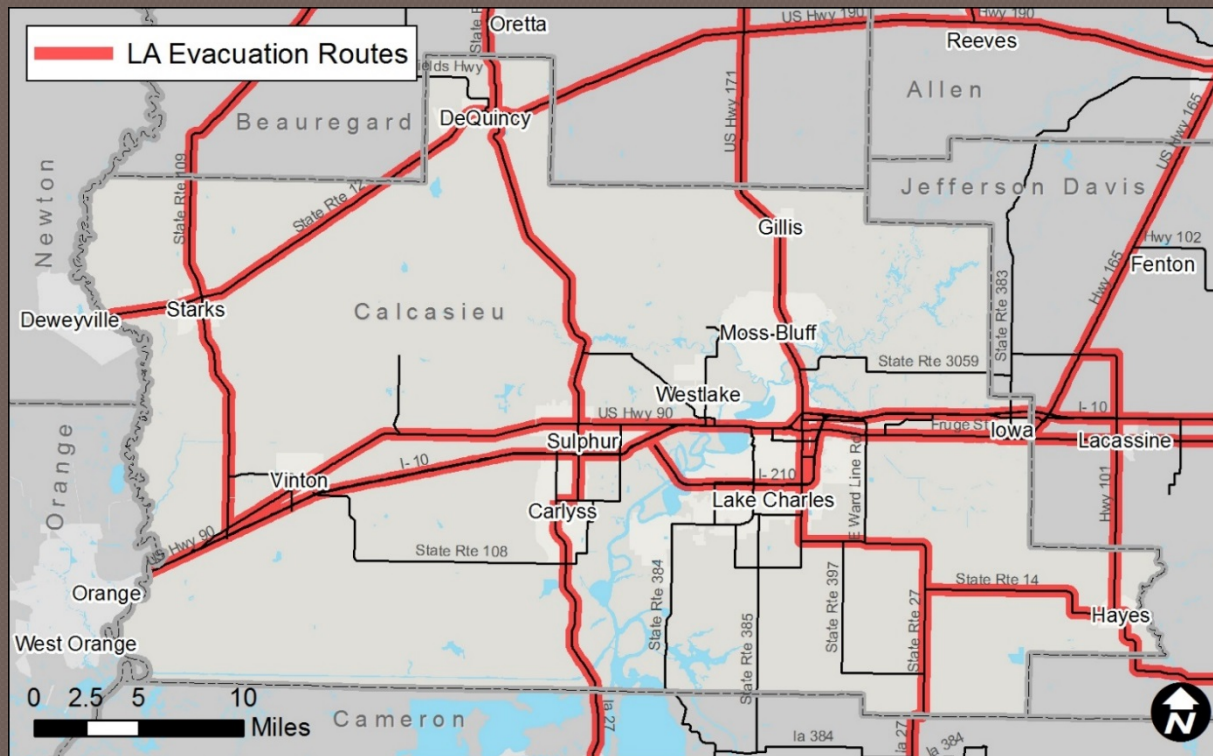
- Greatest need for sidewalk along major roadways is in Sulphur and South Lake Charles.
- Existing Pedestrian and Bicycle Plans for Parish and Lake Charles.
- Transit coverage is low, especially compared to selected counties.

Households within Walking Distance of Bus Stop

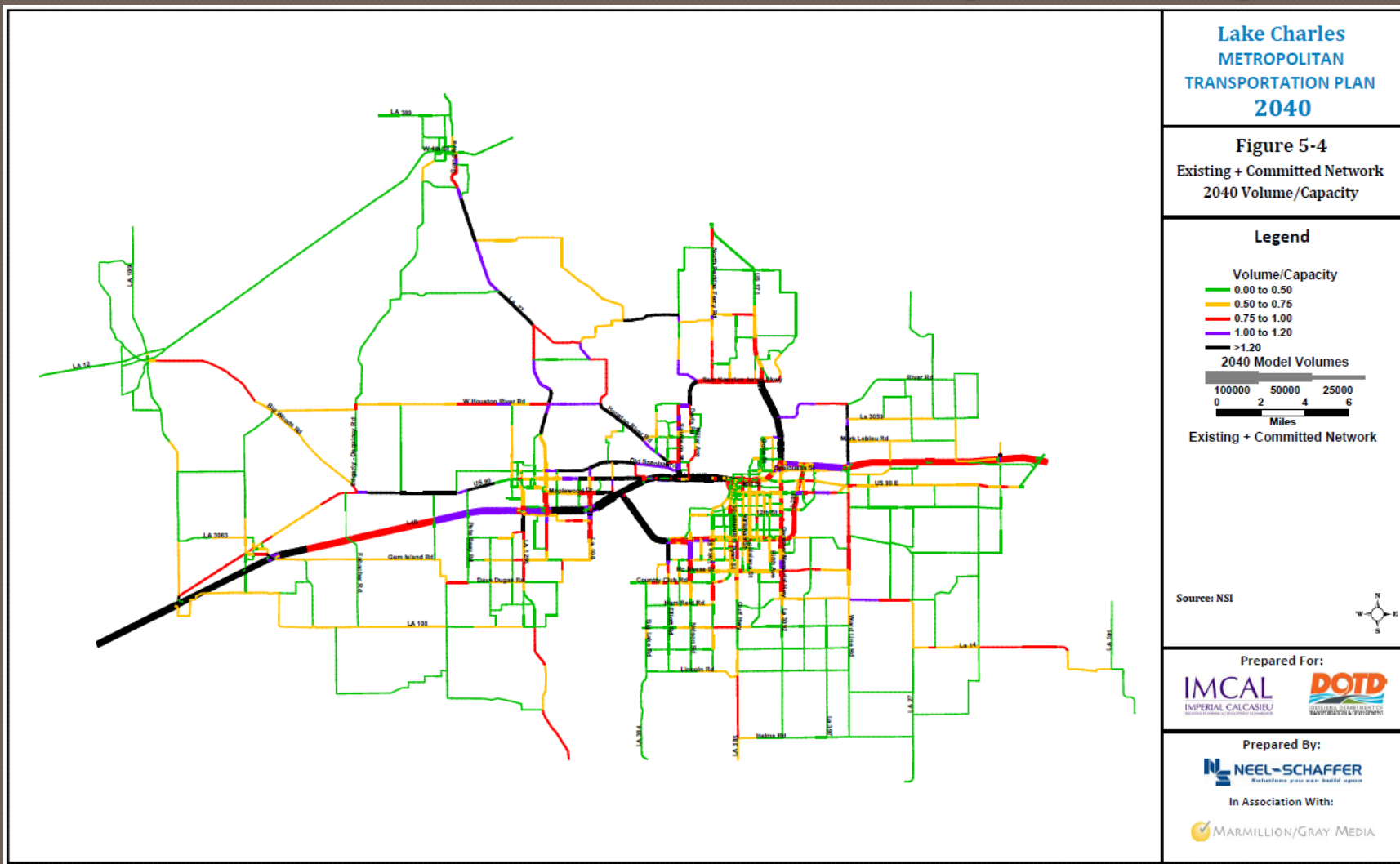


Parish Profile: Evacuation Planning

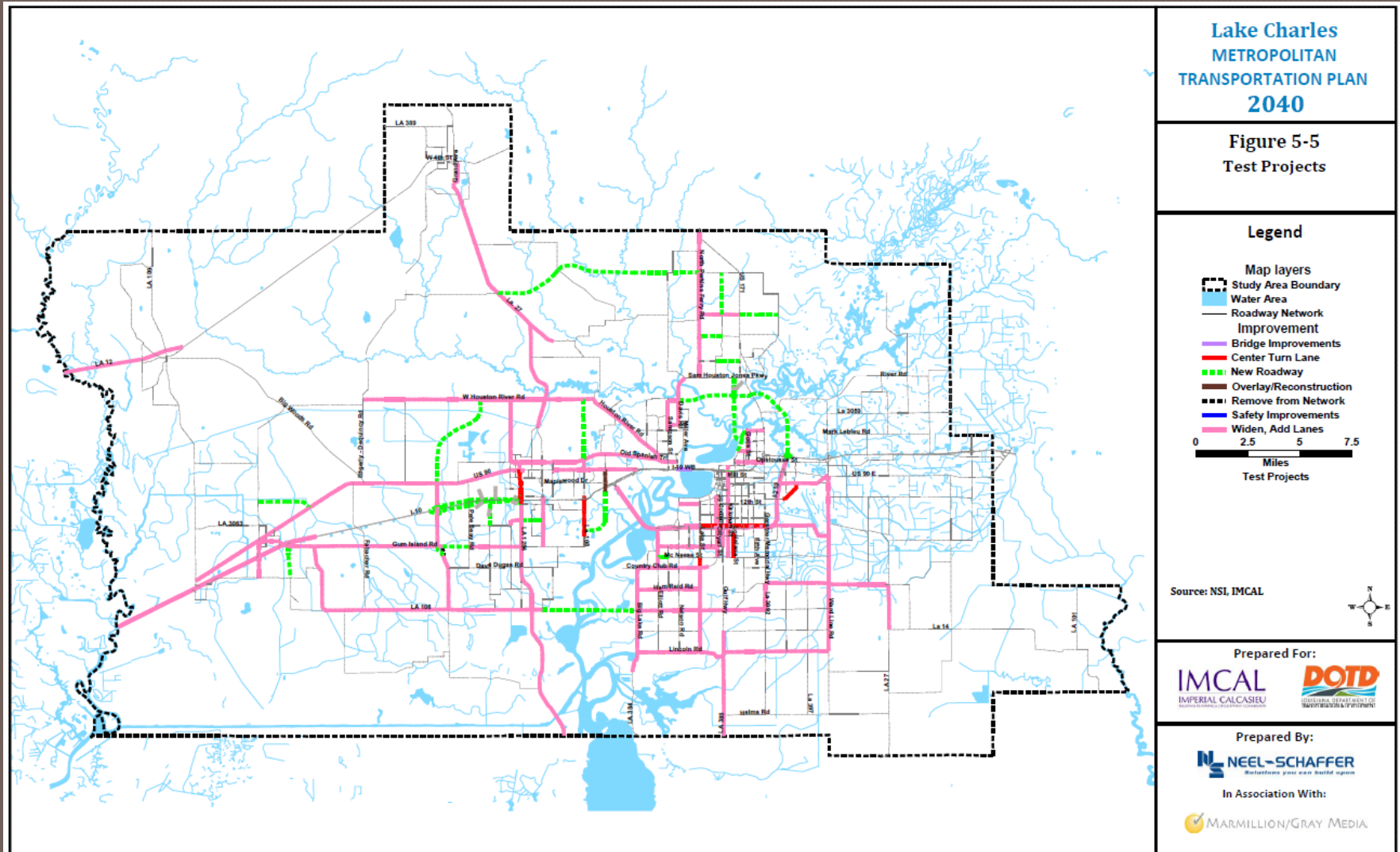
- Sufficient transportation infrastructure.
- Special consideration for households without access to vehicle.



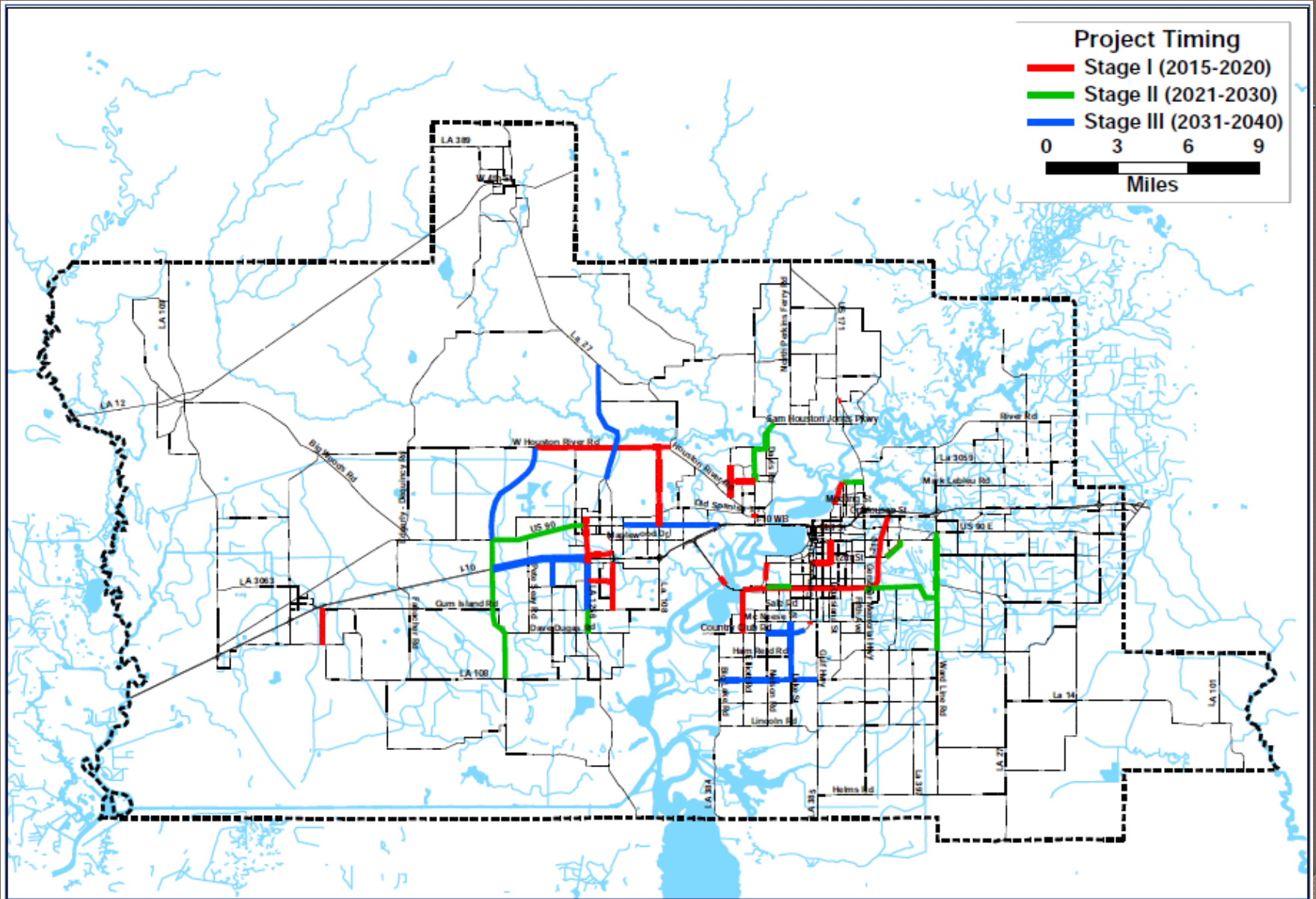
Deficiency Analysis



Test Projects



MTP 2040



Priority Projects

- **I-10 Widening to Six Lanes**
- **LA 27 Widening From Lewis St to Bankens to LA 12**
- **LA 378 Corridor Impvts – John Stine to LA 378 Spur**
- **US 90 Corridor Impvts in Sulphur Area – From I-10 to Post Oak Ave**
- **Houston River Rd Improvements – LA 378 to LA 27 / N Beglis Pkwy**
- **Enterprise Blvd Extension to Fitzenreiter Rd to US 171**
- **Nelson RD Ext from Avenue L'Auberge to Sallier St. - New 4 Lane Road and Bridge (Committed Project)**
- **Cities Service Hwy Extension (Sasol Project)**
- **New I-10 Interchange West of Ruth St / LA 1256 Interchange**