



River Bluff Park

Calcasieu Parish, Louisiana

Delivering sustainable solutions in a more competitive world



RIVER BLUFF Park Development

ERM Team Presentation

A. Team Introductions

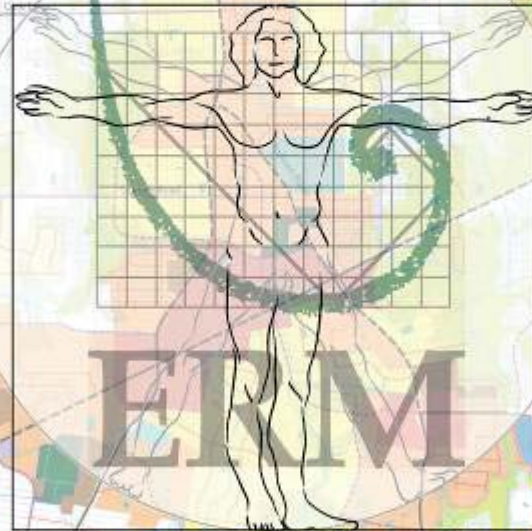
B. Workshop

- 1) Context of Thinking**
- 2) Project Regional Context**
- 3) Parish Park Context & Inventory**
- 4) Sustainability Projects and Concepts**
- 5) Park Visioning**
- 6) Next Steps / Homework / Schedule**

Questions and Answers

SUSTAINABILITY

Latin: *sustinere* (tenere, to hold; sus., up)



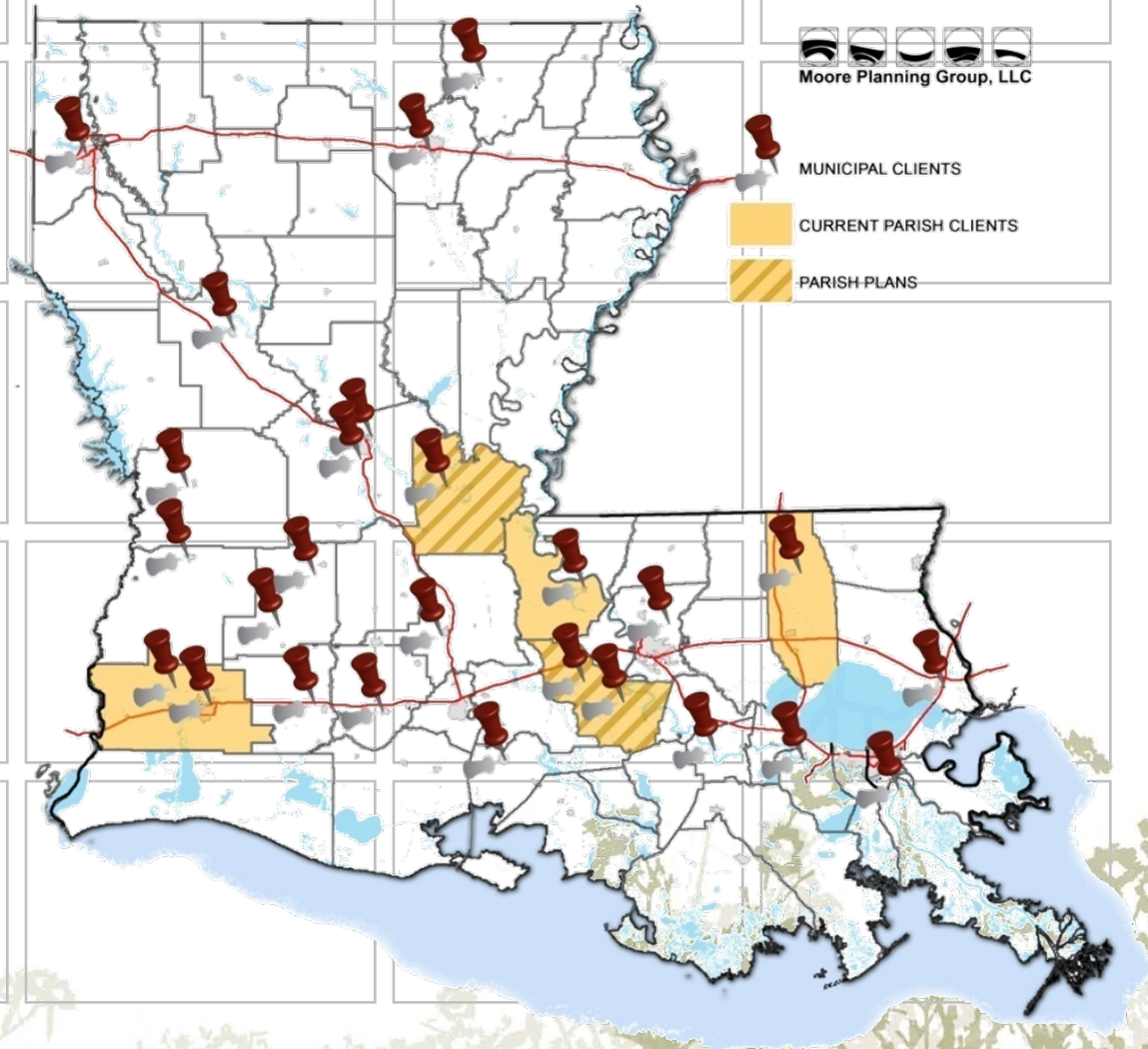
"Happiness is when a man and his land are fertile" - PLATO



29 YEAR VOCATION

GENERAL SERVICE AGREEMENTS

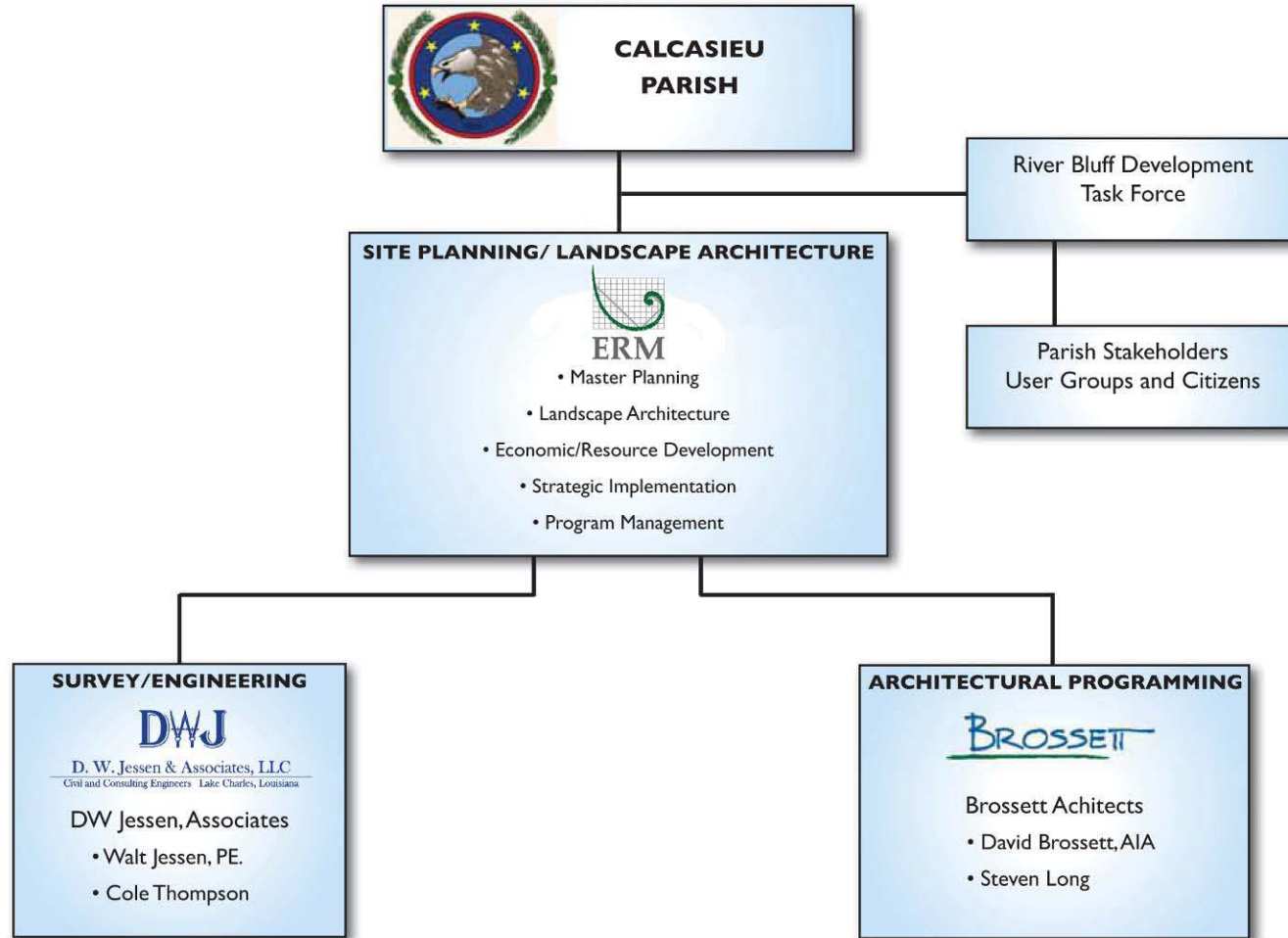
- Parishes
- Municipalities
- Universities
- Private Clients



RIVER BLUFF Park Development

Environmental Resources Management Team

ORGANIZATIONAL CHART



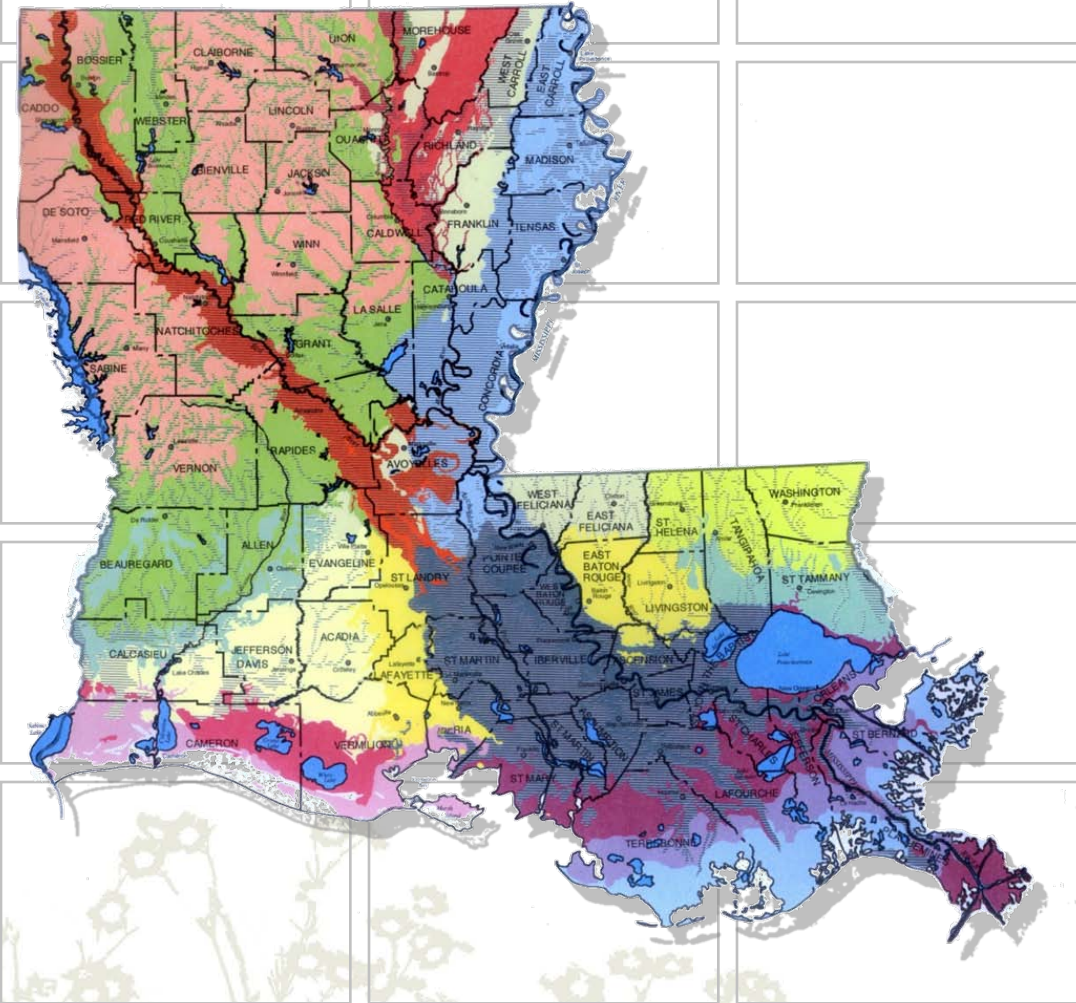
ERM












Task Force On-site Meeting Feb.15, 2011

Context of Thinking

NATURAL SYSTEMS - LOUISIANA SOILS



Legend:

- 
Southern Mississippi Valley Silt Uplands
 Soils on thick loess deposits
- 
Subtropical Mississippi Valley Silt Uplands
 Soils on thick loess deposits
- 
Gulf Coast Prairies – Soils on clayey and loamy alluvial deposits
- 
Southern Mississippi Valley Alluvium –
 Soils on loamy and clayey alluvial natural levees and low terraces
- 
Southern Mississippi Valley Alluvium –
 Soils on loamy and clayey low terraces and floodplains
- 
Subtropical Mississippi Valley Alluvium -
 Soils on sandy, loamy natural levees and low terraces
- 
Subtropical Mississippi Valley Alluvium –
 Soils on loamy and clayey low terraces and floodplains
- 
Red River Valley Alluvium – Soils on sandy loamy alluvial natural levees and low terraces
- 
Red River Valley Alluvium – Soils on loamy and clayey low terraces and flood plains

NEXT STEPS

For North Louisiana and Mississippi the challenge is to:

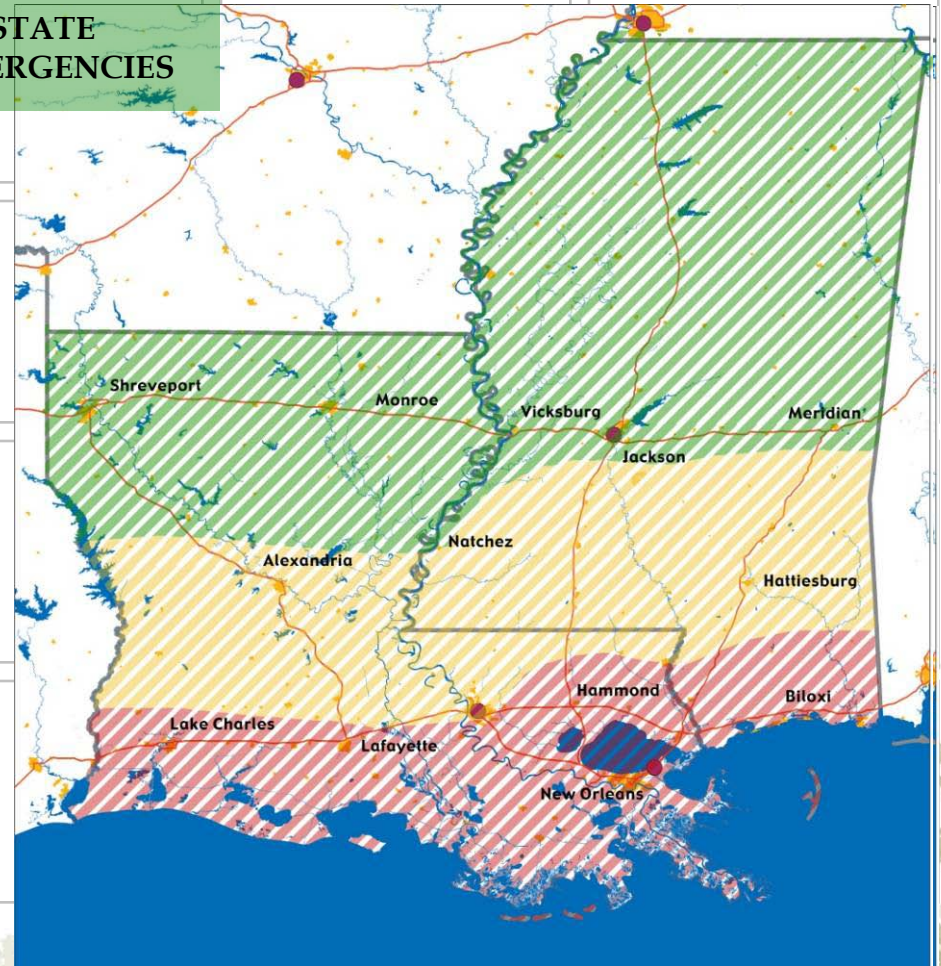
- CONTINUE STRONG PARTNERSHIPS WITH REST OF STATE
- IMPROVE PREPAREDNESS TO SUPPORT FUTURE EMERGENCIES

For Central Louisiana and Mississippi the challenge is to:

- IMPROVE PREPAREDNESS FOR EMERGENCIES
- BALANCE THE OPPORTUNITIES WITH THE STRESS
 - +INCREASED ECONOMIC ACTIVITY
 - +SHIFTS IN POPULATION
 - -COSTS OF INFLUX
 - -LACK OF PLANNING CAPACITY

For South Louisiana and Mississippi the challenge remains to restore:

- CITIZEN'S CONFIDENCE IN THEIR COMMUNITIES
 - FLOOD PROTECTION
 - COASTAL RESTORATION
 - HAZARD MITIGATION
 - EVACUATION STRATEGIES
 - QUALITY OF LIFE ISSUES
- THE STATE'S VITAL ECONOMIC ENGINES
- TO BETTER THAN PREVIOUS LEVELS



Part of refining the plan involved stepping back and completing an evaluation of plan components in light of the Louisiana Speaks Regional Plan (LSRP). This plan was developed after the hurricanes to help guide safer, stronger, smarter development along the Gulf Coast. Lake Charles, being a major presence, will benefit greatly by incorporating LSRP criteria into the decision making about future development/redevelopment. The Louisiana Speaks Regional Plan lists the following as the goals and actions:

Vision Goal One- Recover Sustainably: Strategies for Near-Term Recovery

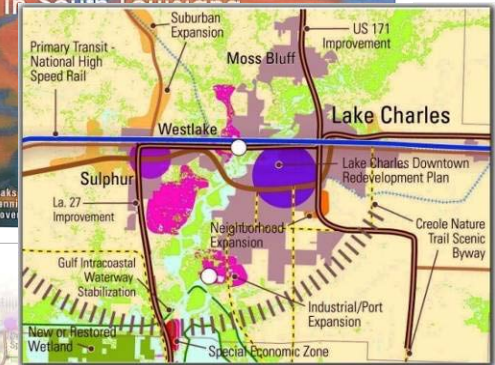
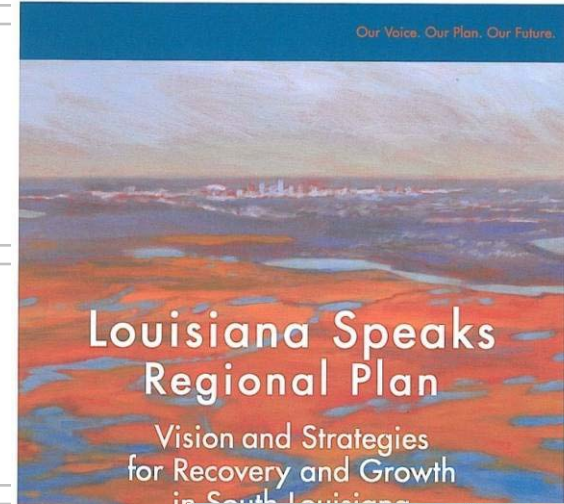
- Adopt the (CPRA) Master Plan
- Identify and remove obstacles to affordable insurance.
- Coordinate local, parish, state, and federal recovery efforts
- Focus infrastructure and new development into existing communities/urbanized areas.
- Provide financial assistance, housing, quality healthcare, and training programs
- Build a local housing industry, coastal-sciences technology sector.
- Expand access to quality healthcare and K-12 educational opportunities.

Vision Goal Two- Grow Smarter: Strategies for Long Term Reinvestment and Growth

- Coordinate protection/restoration with public/private investment, and state/local policies.
- Build new walkable communities coordinated with transportation/protection
- Infrastructure focused on existing assets
- Build efficient passenger/freight transportation networks (road, rail, air, water).
- Build a Robust and Resilient Economy
- Ensure adequate housing to meet a range of future needs throughout the region.
- Sustain the places we treasure and the things that make us Louisiana.
- Provide Quality Social and Community Services, including healthcare and education

Vision Goal 3- Think Regionally: Planning and Implementation

- Extend the Louisiana Speaks Regional Plan to the entire state
- Achieve Effective Statewide Planning by resources and legislation





VISION

CHAMPION

RESOURCE



HIGH QUALITY OF LIFE

Management Realm

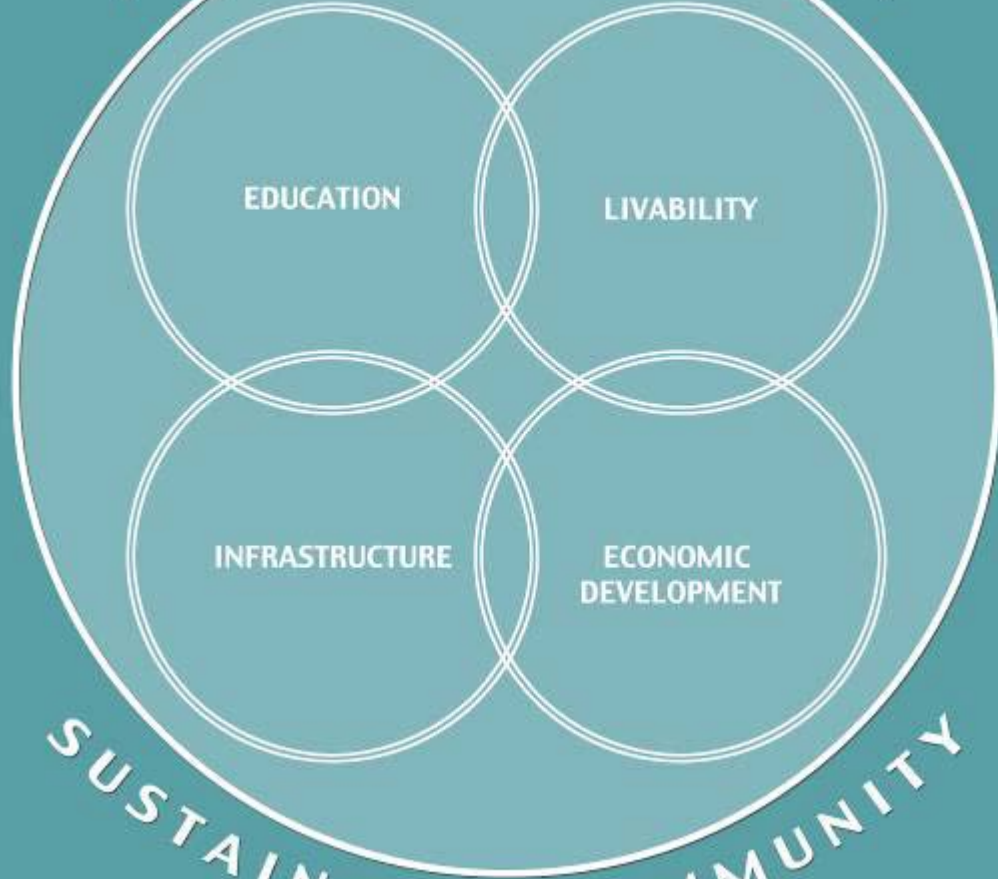
EDUCATION

LIVABILITY

INFRASTRUCTURE

ECONOMIC
DEVELOPMENT

SUSTAINABLE COMMUNITY



PLANNING for SUCCESS

Establishing the Balance

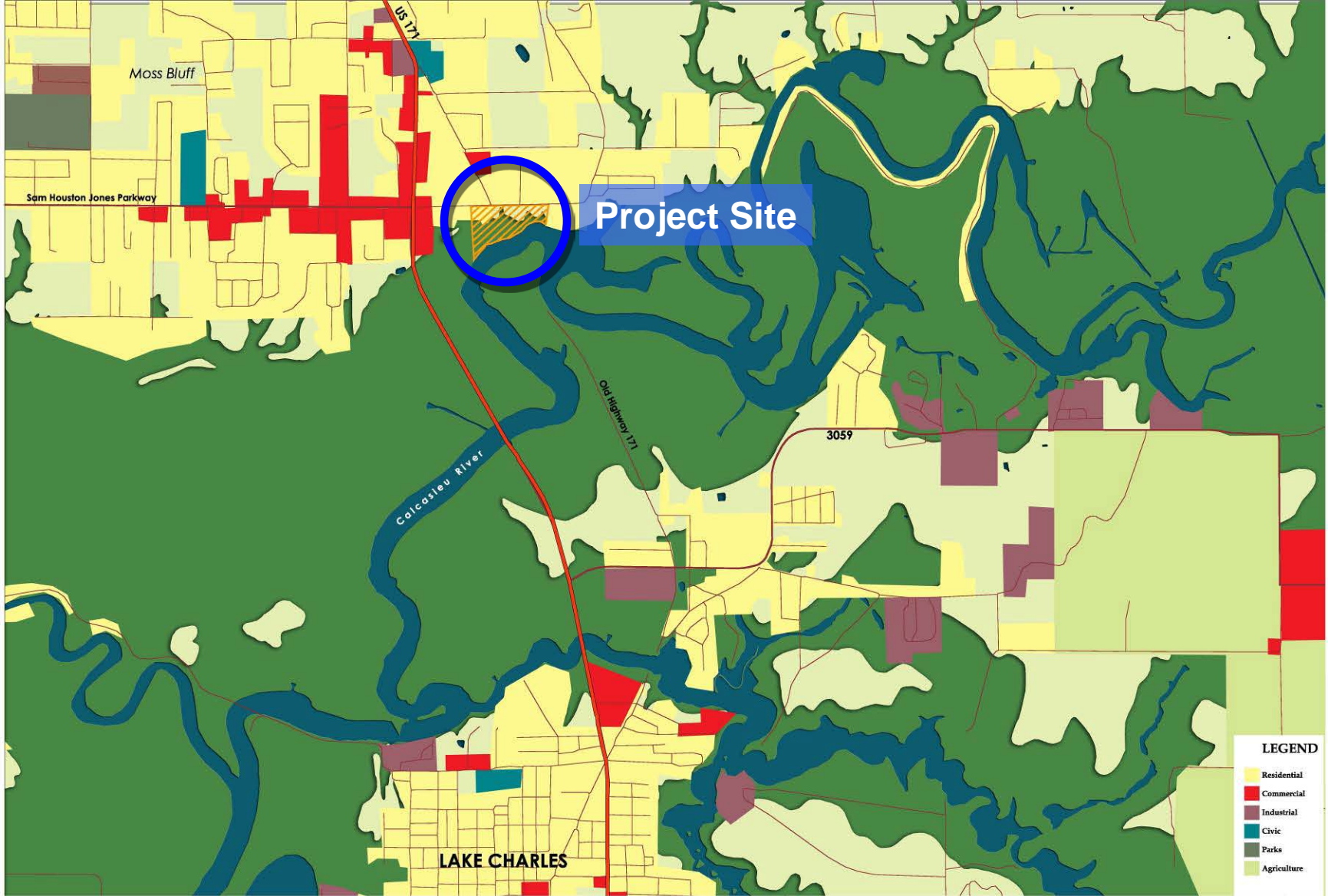
- **Economic Development-** Business development environment, general commerce, job creation, generation of fiscal resources
- **Education-** Public and private schools, continuing education, and workforce training
- **Infrastructure-** Transportation, water, power, drainage, sanitary sewer, communications, etc...
- **Livability-** The things that make us care about our community, the reason we love our community- ease of living, health, beauty, cleanliness, safety, access to recreation, arts and cultural activities, community spirit and sense of place.

Balance of Ingredients



Project Regional Context

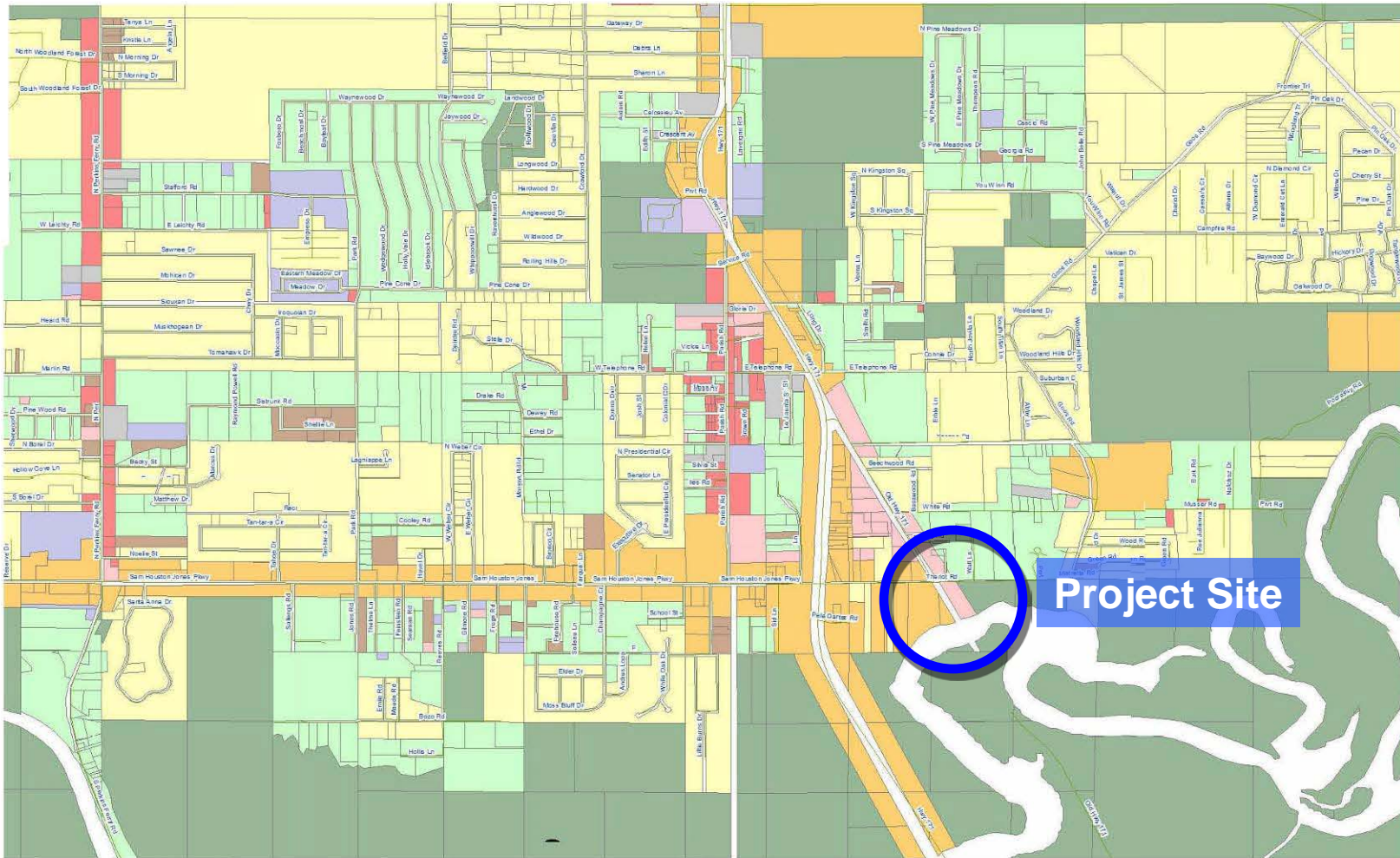




RIVER BLUFF PARK DEVELOPMENT
Calcasieu Parish, Louisiana

LAND USE - REGIONAL CONTEXT





LEGEND

- a1
- c1
- c2
- c3
- city
- i1
- i2
- i2r
- i3
- rud
- r1
- r2
- rm
- rmhp
- Lake
- nelson



HOLBROOK PARK

- Boat Launch / Water Access
- Overnight Camping
- Kitchen / Indoor Facilities
- Group Pavillion
- Picnic Tables
- Playground
- Restrooms

WHITE OAK PARK

- Boat Launch / Water Access
- Overnight Camping
- Kitchen / Indoor Facilities
- Group Pavillion
- Picnic Tables
- Playground
- Restrooms

SAM HOUSTON JONES STATE PARK

- Boat Launch / Water Access
- Overnight Camping
- Kitchen / Indoor Facilities
- Outdoor Classroom
- Group Pavillion
- Picnic Tables
- Walking Path / Trails
- Playground
- Restrooms

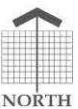
Proposed River Bluff Park



RIVER BLUFF PARK DEVELOPMENT

Calcasieu Parish, Louisiana

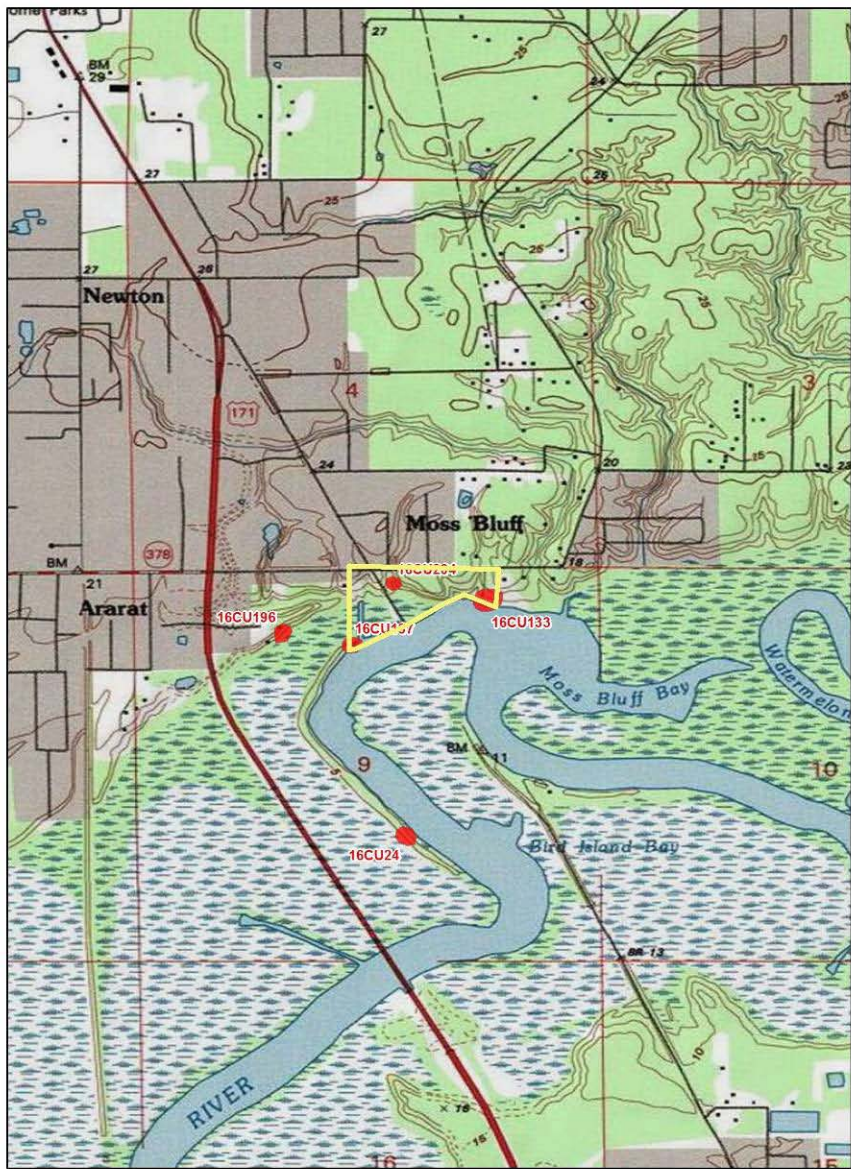
REGIONAL PARK CONTEXT



Parish Park Context and Inventory



Moss Bluff Police Jury Park Area



0 115230 460 690 920
Meters

0 0.25 0.5 1 Miles

Known Archaeological Sites in and around River Bluff Site

- “The sites are **16CU133**, **16CU137** and **16CU204**, which are recorded as shell midden and prehistoric artifact scatter sites. These sites are known from surface collection only, so their actual boundaries are not known.”

*David T. Palmer, Ph.D.
Registered Professional
Archaeologist, University of
Louisiana at Lafayette*

