

MOSQUITO VOCABULARY

- 1. Abdomen**
(ab-do-men) - rear body region of an insect
- 2. Adulticide**
(a-dul-ti-cide) - to kill adult mosquitoes
- 3. Diptera**
(dip-tera) - order of insects which includes the 2-winged flies; gnats, flies, mosquitoes, etc.
- 4. Ecology**
(e-col-o-gy) - study of the relationship between animals and their environment
- 5. Entomologist**
(en-to-mol-o-gist) - a scientist who studies insects
- 6. Exoskeleton**
(ex-o-skel-e-ton) - the hard, outer, protective covering of insects
- 7. Hypopharynx**
(hy-po-phar-ynx) - mouthpart of a mosquito, a very small tube that transfers saliva to the bite victim
- 8. Insecticide**
(in-sec-ti-cide) - a poison used to kill insects
- 9. Lancets**
(lan-cets) - 4 tiny, sharp, saw-like parts of a mosquito's proboscis that cut the skin of a bite victim
- 10. Larva**
(lar-va) - (larvae, plural) the aquatic feeding stage of immature mosquitoes
- 11. Larvicide**
(lar-vi-cide) - to kill mosquito larvae
- 12. Metamorphosis**
(met-a-mor-pho-sis) - the changes an insect goes through in its development
- 13. Molt**
(molt) - shedding of the exoskeleton
- 14. Pesticide**
(pes-ti-cide) - poison used to kill pests
- 15. Proboscis**
(pro-bos-cis) - the long mouthparts of some insects
- 16. Pupa**
(pu-pa) - (pupae, plural) the aquatic non-feeding stage of immature mosquitoes
- 17. Sheath**
(sheath) - a covering or case for a knife, in this case, a covering for the proboscis
- 18. Siphon**
(si-phon) - the breathing tube of a mosquito larva
- 19. Species**
(spe-cies) - group of plants or animals that look alike and reproduce
- 20. Stylets**
(sty-lets) - the six slender parts of a mosquito's proboscis
- 21. Thorax**
(tho-rax) - the middle body region of an insect where the head, abdomen, legs and wings attach
- 22. Trumpets**
(trum-pets) - the breathing tubes of a pupa



WORD SEARCH

L O V M E L D I P T E R A I E W M
T O Y E T T H A X V W E A E G S T
A A O T L R Y E A J A O D E I P E
R G C A E S G T R O N I N U H A A
E T R M N G O Y O T C S L G O R M
H V I O A R L O H I R D A N N P T
A N G R Y O O U T O I U M E G R S
L P R P N A C C C S E W M D T O I
T O U H X A E U P T P O R N T B G
E T L O M S I N E E D E V E I O O
R Y E S N R I R T B S P C E G S L
S E C I E P U P A I A T M I R C O
E S I S T R U N H L L W I U E I M
X S T E P M U R T O A E T C R S O
L A R V I C I D E X N M H O I T T
O S I T I L A H P E C N E U T D N
S K L E L E N O T E L E K S O X E

Abdomen

Dengue

Diptera

Ecology

Encephalitis

Entomologist

Exoskeleton

Insecticide

Larva

Metamorphosis

Malaria

Larvicide

Molt

Pesticide

Proboscis

Pupa

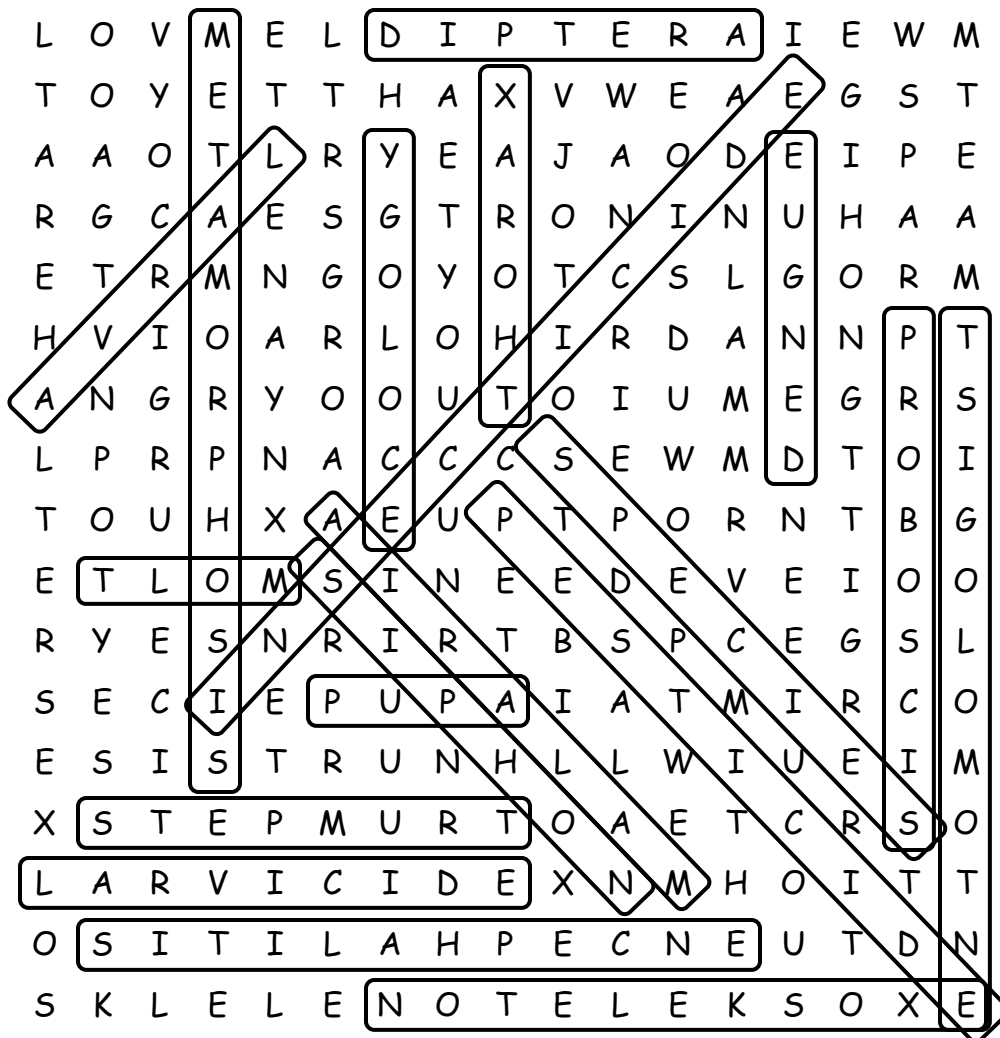
Siphon

Species

Thorax

Trumpets

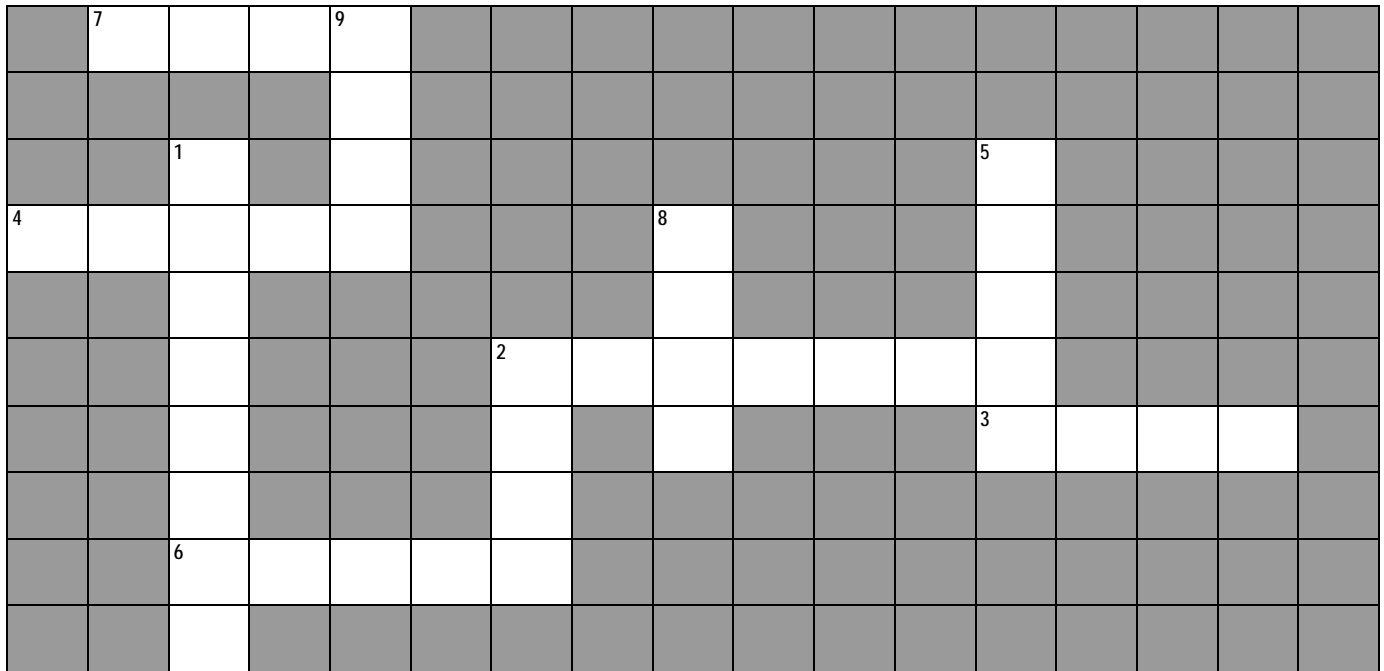
Answers to Word Search



Answers to Quiz

1. Over 3,000
2. 60
3. Egg and pupa
4. Larva and pupa
5. Proboscis
6. Head, thorax, and abdomen
7. She need protein for her eggs to develop
8. A. flies
9. C. only females
10. A. trumpets
11. B. siphon
12. C. suck blood from many animals
13. A. fuzzy antennae
14. F. (no nymph)
15. T
16. T

Try to complete the following puzzle challenge, most of the answers can be found with this booklet or use the 'work bank' at the bottom of the page.



ACROSS

2. Mosquitoes carry _____ to people and animals.
3. _____ provides water for mosquitoes to breed in.
4. _____ live where mosquitoes do and eat them.
6. Sometimes mosquitoes breed in old _____.
7. Stage of mosquito development just before they become adults _____.

DOWN

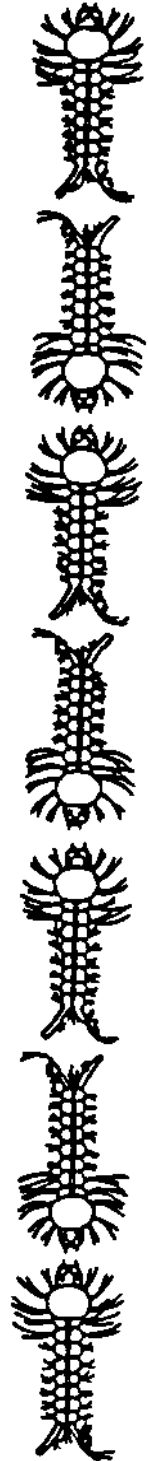
1. _____ control is the agency to call when mosquitoes are a problem.
2. _____ are animals which can be affected by mosquito-borne disease.
5. Mosquitoes need _____ to grow and develop.
8. _____ eat larvae too!
9. Female mosquitoes need blood so their _____ can grow.

Word Bank

PUPA FISH RAIN TIRES MOSQUITO
DOGS WATER EGGS DISEASE FROGS

Mosquito Quiz

1. How many species of mosquitoes occur throughout the world?
2. How many species of mosquitoes are known to occur in Louisiana?
3. During which stage(s) does the mosquito not eat?
4. During which stage(s) is the mosquito an aquatic insect?
5. What is the term for a mosquito's mouth parts?
6. Name the body regions of an insect.
7. Why does the female mosquito require a blood meal?
8. Mosquitoes are most closely related to _____.
 - a. flies
 - b. dragonflies
 - c. bees
9. Which is true?
 - a. Both male and female mosquitoes bite animals.
 - b. Only male mosquitoes bite animals.
 - c. Only female mosquitoes bite animals.
10. Mosquito pupae breathe out of _____.
 - a. structures on their back called trumpets
 - b. a structure near their tail called the siphon
 - c. structures along their abdomen called spicules
11. Mosquito larvae breathe out of _____.
 - a. structures on their back called trumpets
 - b. a structure near their tail called the siphon
 - c. structures along their abdomen called spicules



12. Mosquitoes _____.
- a. only suck the blood of humans
 - b. only suck blood from warm blooded creatures
 - d. suck blood from many animals including reptiles, amphibians, birds and mammals.

13. Which drawing of the mosquito heads is the male?

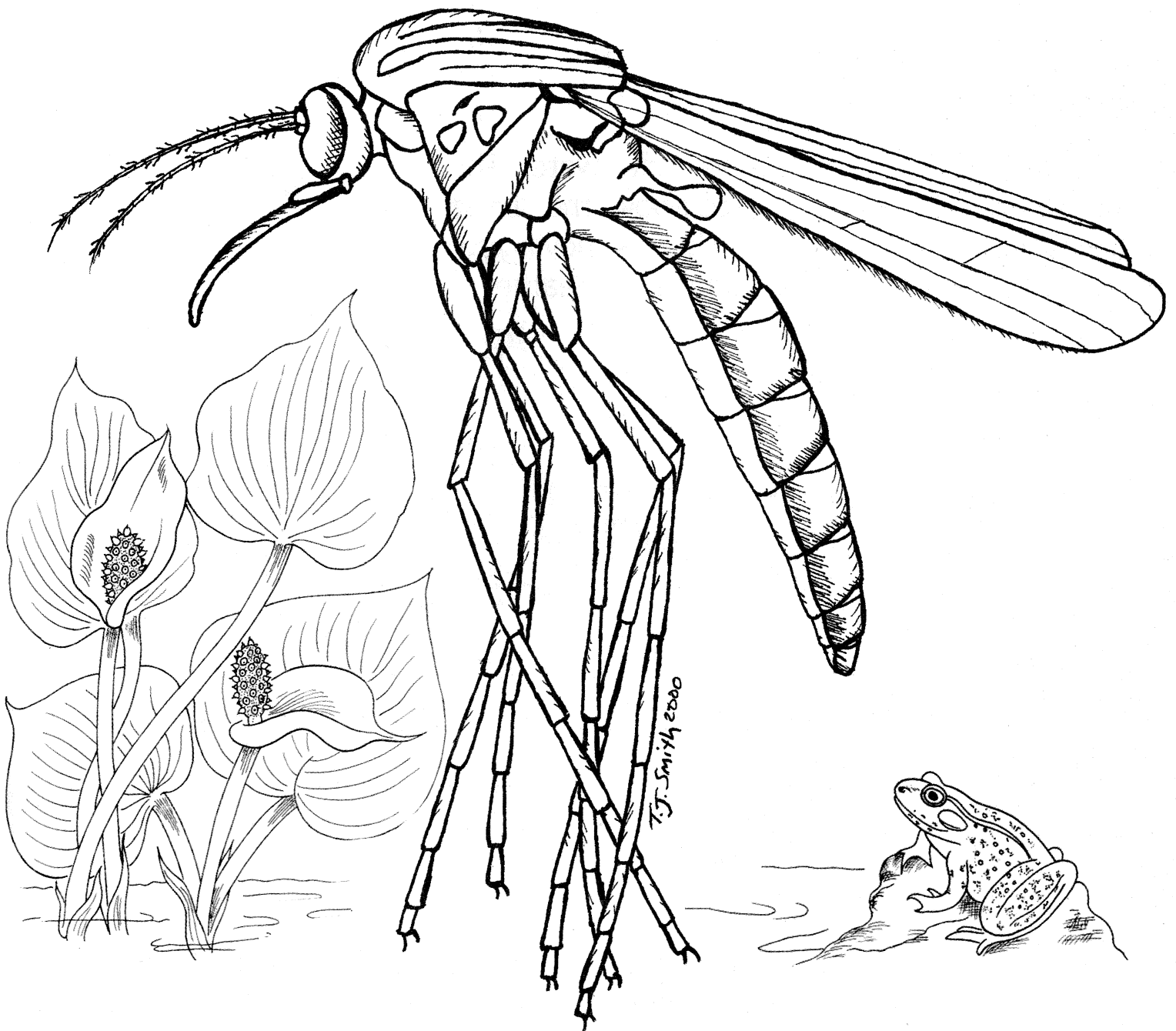


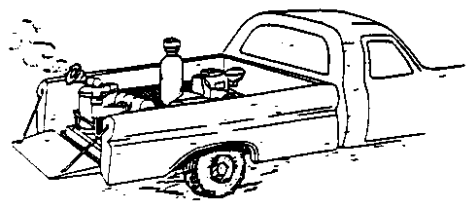
14. T or F Mosquitoes have a complete life cycle consisting of egg, larvae, nymph, pupa, and adult.
15. T or F Male mosquitoes feed on flowers.
16. T or F Some mosquito larvae are predacious, feeding on other mosquito larvae.

A Mosquito to Color

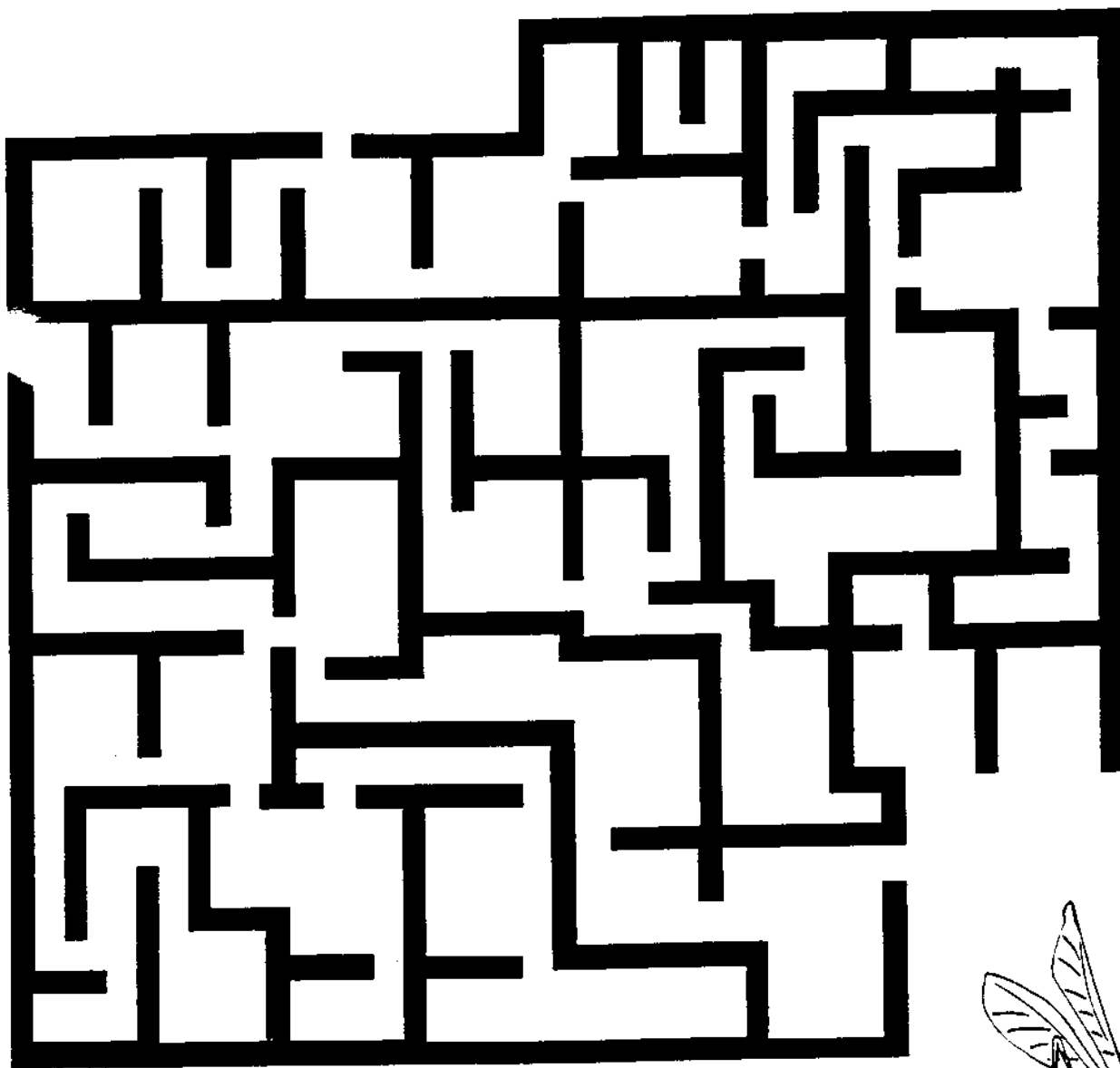
This is the *Culex quinquefasciatus* mosquito, also called the southern house mosquito. Scientists speculate that this mosquito can transmit encephalitis to humans and dog heartworm to dogs.

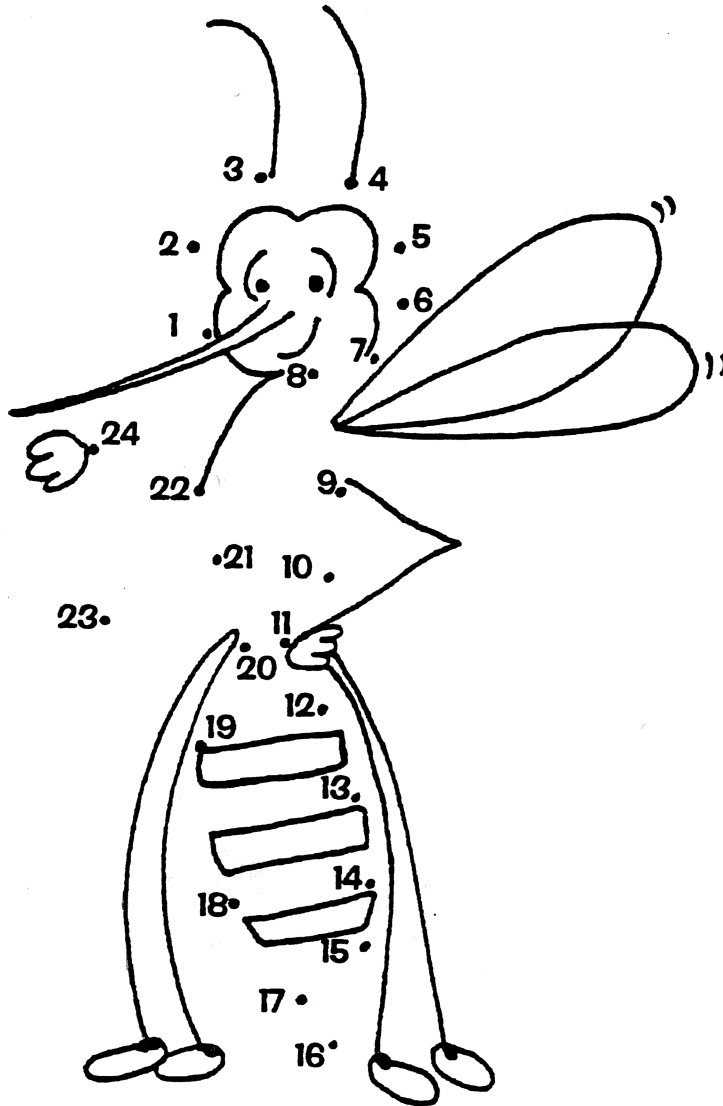
Color the legs, head and thorax a medium brown. The underside of the abdomen is white and the larger segments on the top are medium brown, separated by white bands. The wings are clear.





Help the Spray
Truck Find
The Mosquito





Connect the dots