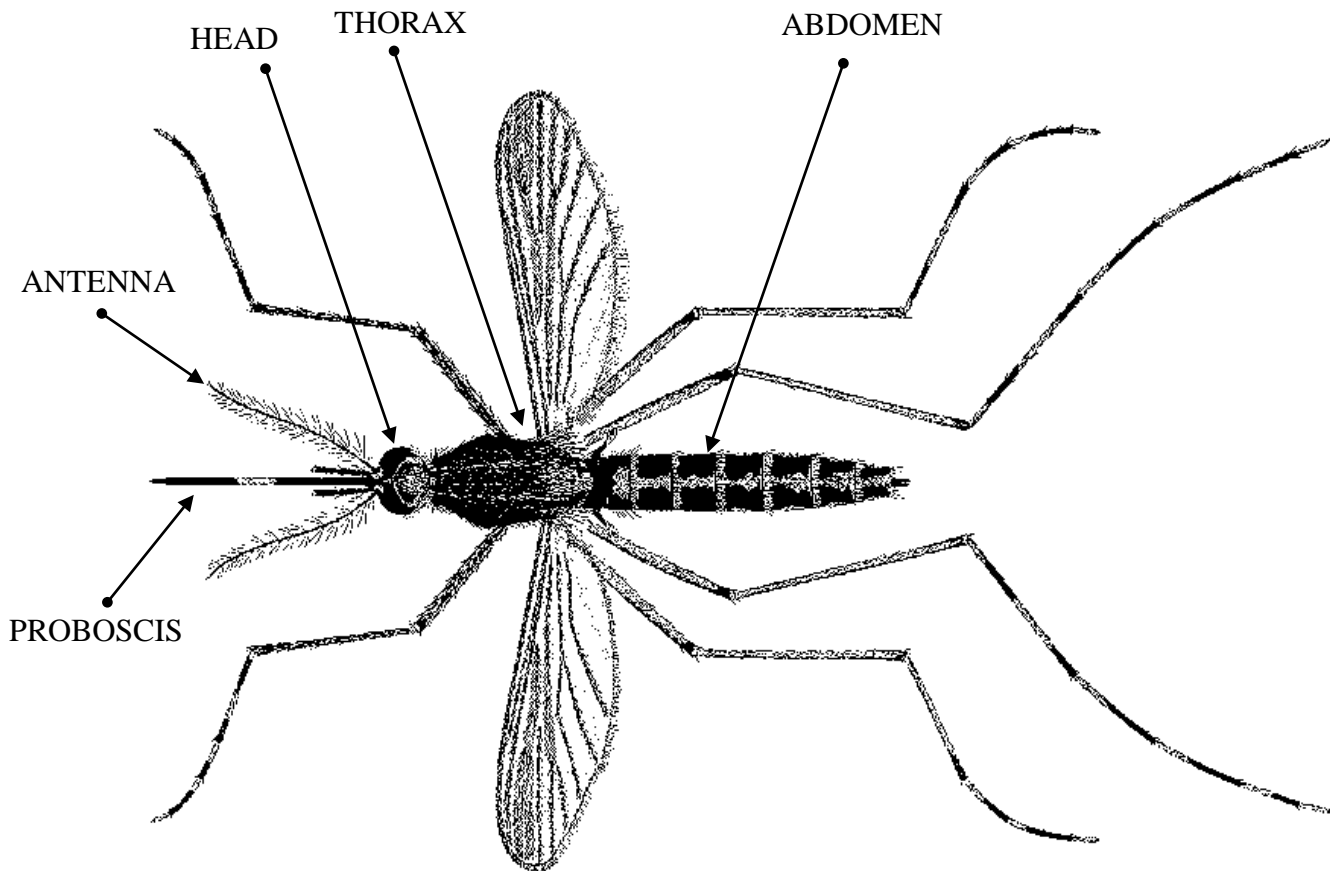


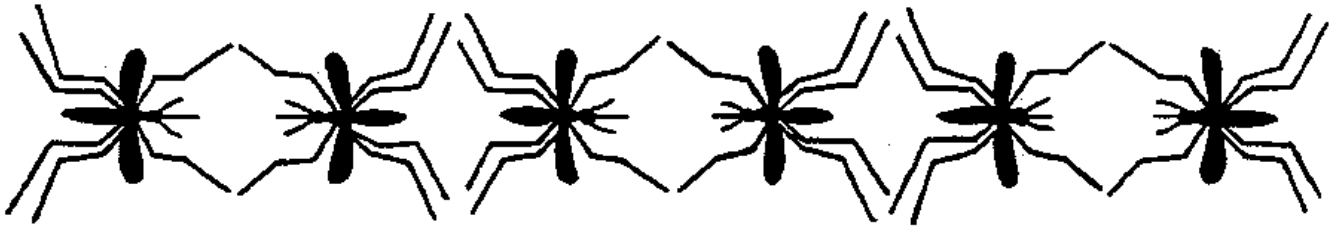
The adult mosquito, like most insects, has three body parts and six legs. The three body parts of the mosquito are the **head**, **thorax** and **abdomen**. The head of the mosquito is highly specialized for obtaining food. The large compound eyes, antennae and mouthparts, or **proboscis** are easily distinguished. The eyes and antennae work together to search for food. Adult mosquitoes feed primarily on plant juices and nectar. The legs and wings are attached to the mosquito's thorax.

There are over 3,000 species of mosquitoes throughout the world. Forty-seven species of mosquitoes have been identified in Lee County, Florida.

Mosquitoes are classified in order *Diptera* with flies and gnats. Dipterans resemble most other insects except they have two wings, instead of our, and their mouthparts are specialized for sucking. The mosquito's abdomen contains most of the vital organs and will store the blood the female mosquito needs to fertilize her eggs.



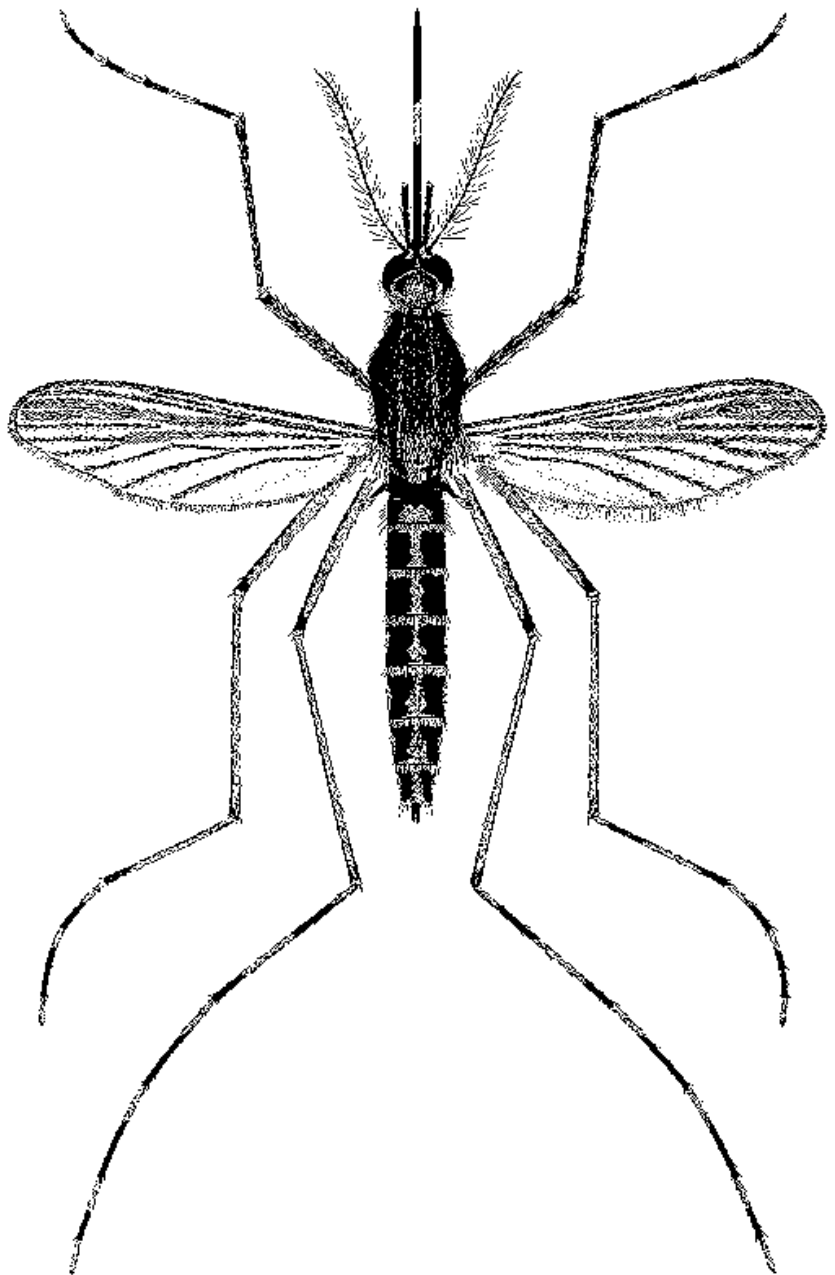
ADULT MOSQUITO PARTS



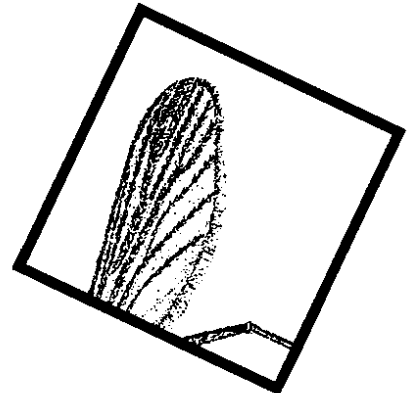
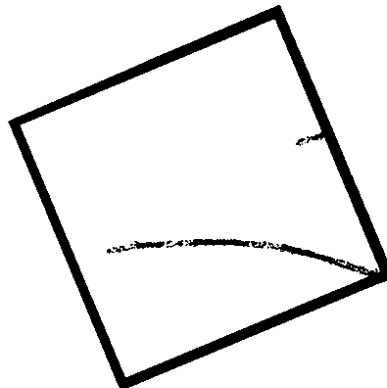
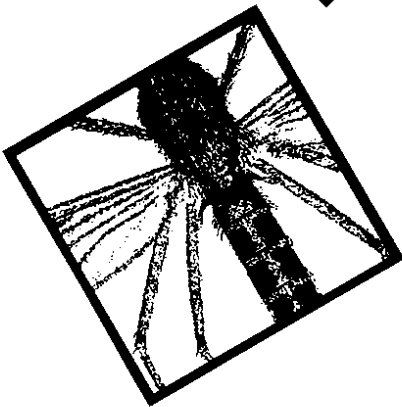
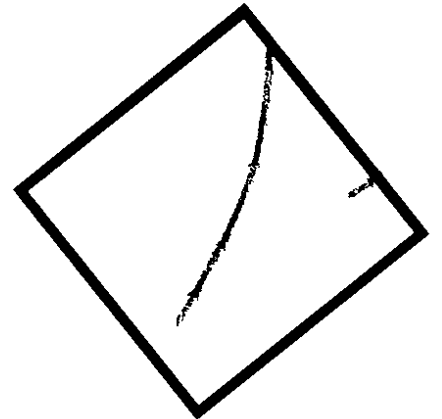
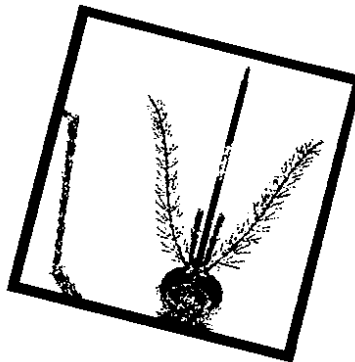
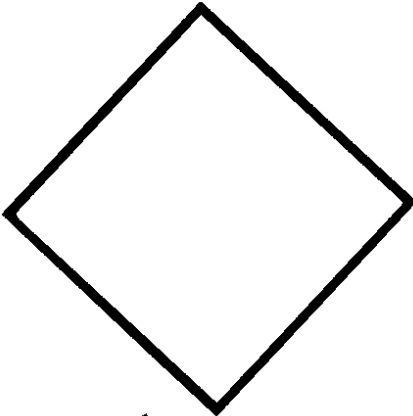
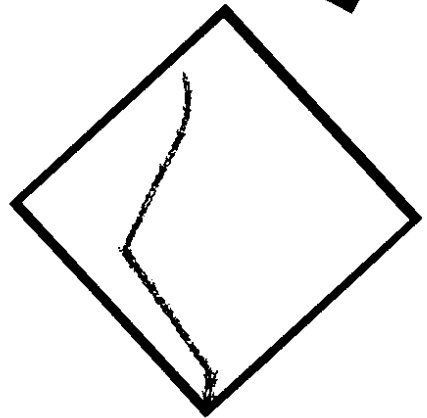
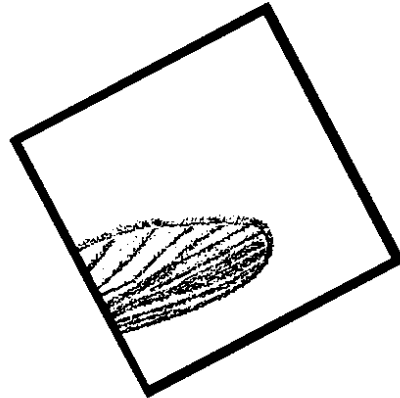
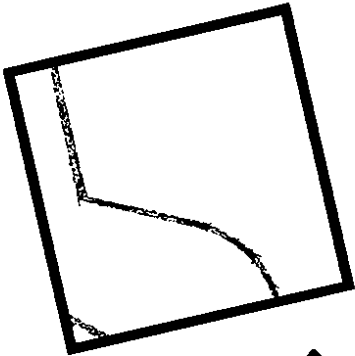
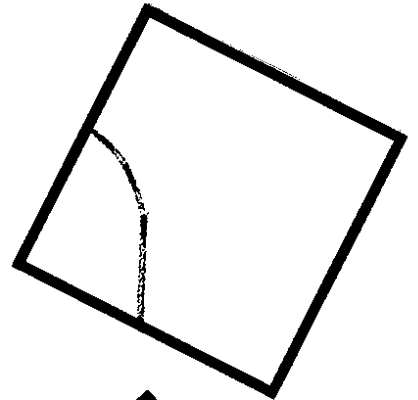
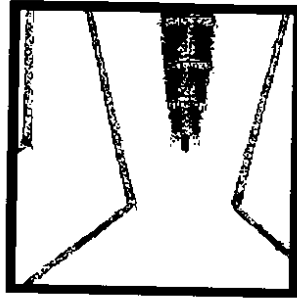
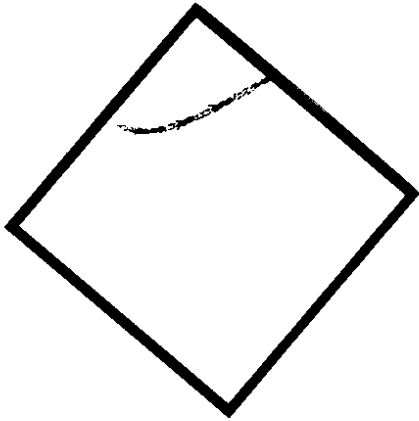
Skeeter Parts

Label the following
Mosquito body parts:

- a) head
- b) eyes
- c) palpi
- d) antennae
- e) proboscis
- f) thorax
- g) legs
- h) wings
- i) abdomen



Mystery Picture Parts



Mystery Picture

Clip and arrange squares from
Mystery Parts Page

